

KONICA MINOLTA

PARTS GUIDE MANUAL

OCTOBER 2015

FS-533
A2YU

INFORMATION FOR PARTS GUIDE MANUAL

To find correct Parts No., refer to the "HOW TO MAKE THE BEST USE OF THIS MANUAL" in the following page.

HOW TO MAKE THE BEST USE OF THIS MANUAL

- 1 When you order, please check the proper figures beforehand that are on Our Parts Guide Manual, and order with the appropriate figures.
- 2 For screws, Nuts, Washers, retaining rings and Pins which are used in this model, one letter is shown on the Standard parts column of Parts list and exploded diagrams.
- 3 In order to maintain safety of the product, some specific parts composed of this product are set up as "essential safety parts".
- 4 The assigned parts number for the "essential safety parts" is indicated as "SP00-****".
When replacing these parts, follow precautions for disassembling and installing which are listed in the Service Manual.
Do not use any parts that are not set up as
- 5 ♣ means that there are exclusive parts for each destination.
Please check the appropriate destination when you order.
- 6 Revision Mark
Marked as ▲ on the illustration shows that the revision has been made.
- 7 All rights reserved. (any reprints or quotations are prohibited.)
Use of this parts guide manual should be strictly supervised to avoid disclosure of confidential information.

パーツガイドマニュアルのご案内

サービス部品をご発注の際には、下記に示す“パーツガイドマニュアルの活用にあたって”をご参照の上、正しい部品番号にてお願い致します。

パーツガイドマニュアルの活用にあたって

- 1 部品発注の際には、掲載されている部品番号の桁数を確認し、掲載されている桁数で発注願います。
- 2 この製品に使用されているネジ、ナット、ワッシャー、止め輪、ピンなどは、リストの右側の Standard parts 欄に a,b,c,…… で表示し、イラストにも a,b,c,…… 表示してあります。
- 3 製品の安全性を維持する為に、製品に使用される特定の部品を「重要保安部品」として設定しています。
- 4 重要保安部品の部品番号は、“SP00-****”と記載されていますので、部品交換時は、サービスマニュアル記載の分解・組み立ての注意事項に従って作業をして下さい。
また、指定以外の部品は一切使用しないで下さい。
- 5 本文に ♣ が表示されている部品は、仕向け地毎に専用部品がある事を意味しています。
オーダーされる時は、仕向け地を確認して下さい。
- 6 改訂記号について
イラスト上に ▲ 印が表示されている部分は、改訂された事を表します。
- 7 著作権所有（無断転載及び無断引用の禁止）
本パーツガイドマニュアルについては、機密保持等その扱いには十分注意して下さい。万一取り扱いを誤った場合には、法律で処罰されることがあります。

CONTENTS

No.	DESCRIPTION	名称	PAGE No.
1	FRAME SECTION	フレーム部	P1
2	EXTERNAL PARTS	外装部	P2
3	ELEVATE SECTION	エレベート部	P3
4	PAPER FEED/TRANSPORT SECTION	給紙／搬送部	P4 P5 P6 P7 P8 P9 P10
5	ADJUSTMENT SECTION	整合部	P11 P12
6	STAPLER SECTION	ステープル部	P13
7	DRIVE SECTION	駆動部	P14
8	ELECTRICAL COMPONENTS	電装部	P15
9	WIRING ACCESSORIES AND JIGS	配線部品・治具	P16

INDEX

Parts No.	Page No.
4583439601	3-7
4583439601	7-15
9J08P00100	13-8
A0U7PP0800	14-16
A0U7PP0U00	9-26
A0U7PP0X00	3-16
A0U7PP0X00	5-2
A0U7PP0X00	7-14
A0U7PP0X00	10-8
A0U7PP1300	3-17
A0U7PP1300	5-5
A0U7PP1E00	5-21
A0U7PP1E00	6-2
A0U7PP1E00	7-13
A0U7PP1E00	8-17
A0U7PP1G00	10-22
A0U7PP1Q00	14-7
A0U7PP1U00	10-12
A0U7PP2J00	10-15
A0U7PP2R00	10-3
A0U7PP4A00	4-12
A0U7PP8S01	2-18
A0U7PP8S01	7-5
A0U7PP8S01	8-2
A0U7PP8S01	9-20
A0U7PP8S01	11-14
A0U7PP8S01	12-3
A0U7PP8S01	13-16
A0U7PP8W01	14-14
A0U7PP9K01	1-13
A0U7PPA500	10-13
A0U7PPAK00	7-6
A0U7PPAK00	8-3
A0U7PPAK00	9-19
A0U7PPAX01	1-14
A0U7PPB400	5-6
A0U7PPB501	5-7
A0U7PPCB00	10-6
A2YUPP0101	13-11
A2YUPP0200	1-18

Parts No.	Page No.
A2YUPP0300	1-6
A2YUPP0400	14-15
A2YUPP0501	2-6
A2YUPP0601	1-12
A2YUPP0701	1-10
A2YUPP0801	1-3
A2YUPP0900	1-16
A2YUPP1001	1-17
A2YUPP1101	1-7
A2YUPP1200	3-6
A2YUPP1300	3-19
A2YUPP1400	10-24
A2YUPP1500	3-27
A2YUPP1600	3-24
A2YUPP1700	10-26
A2YUPP1800	15-2
A2YUPP1900	10-1
A2YUPP2001	2-14
A2YUPP2100	14-1
A2YUPP2202	11-1
A2YUPP2301	12-14
A2YUPP2401	12-30
A2YUPP2501	11-3
A2YUPP2600	12-18
A2YUPP2700	7-7
A2YUPP2800	7-3
A2YUPP2800	8-13
A2YUPP2900	12-27
A2YUPP3000	9-2
A2YUPP3100	5-9
A2YUPP3200	12-31
A2YUPP3300	8-12
A2YUPP3300	9-23
A2YUPP3400	11-4
A2YUPP3500	12-32
A2YUPP3600	3-18
A2YUPP3700	8-25
A2YUPP3801	5-11
A2YUPP3900	5-10
A2YUPP4002	2-4

Parts No.	Page No.
A2YUPP4100	10-25
A2YUPP4200	5-17
A2YUPP4200	9-6
A2YUPP4300	12-8
A2YUPP4400	2-8
A2YUPP4501	3-25
A2YUPP4600	4-16
A2YUPP4700	1-8
A2YUPP4801	13-17
A2YUPP4900	13-20
A2YUPP5000	13-3
A2YUPP5100	14-18
A2YUPP5200	14-11
A2YUPP5301	1-15
A2YUPP5400	1-9
A2YUPP5500	14-17
A2YUPP5600	2-12
A2YUPP5701	2-2
A2YUPP5801	2-1
A2YUPP5901	11-13
A2YUPP6000	2-11
A2YUPP6101	2-17
A2YUPP6201	1-11
A2YUPP6300	3-15
A2YUPP6401	3-30
A2YUPP6501	3-29
A2YUPP6600	10-23
A2YUPP6700	10-19
A2YUPP6800	10-16
A2YUPP6900	13-23
A2YUPP7000	13-22
A2YUPP7100	3-28
A2YUPP7200	2-16
A2YUPP7300	3-12
A2YUPP7400	3-1
A2YUPP7500	15-4
A2YUPP7601	15-7
A2YUPP7701	15-6
A2YUPP7800	11-12
A2YUPP7900	2-7

Parts No.	Page No.
A2YUPP8000	2-13
A2YUPP8100	2-9
A2YUPP8200	3-14
A2YUPP8300	9-25
A2YUPP8400	8-8
A2YUPP8500	12-2
A2YUPP8600	12-7
A2YUPP8700	12-5
A2YUPP8800	12-1
A2YUPP8900	12-11
A2YUPP9000	12-36
A2YUPP9101	12-29
A2YUPP9202	12-19
A2YUPP9302	12-35
A2YUPP9401	12-26
A2YUPP9501	12-34
A2YUPP9600	12-25
A2YUPP9700	12-33
A2YUPP9800	12-13
A2YUPP9900	12-12
A2YUPPA000	10-7
A2YUPPA100	12-9
A2YUPPA200	11-5
A2YUPPA302	4-5
A2YUPPA402	4-11
A2YUPPA500	6-21
A2YUPPA600	6-7
A2YUPPA700	9-8
A2YUPPA800	6-17
A2YUPPA900	4-7
A2YUPPB000	4-14
A2YUPPB100	4-13
A2YUPPB200	6-12
A2YUPPB300	9-5
A2YUPPB402	8-30
A2YUPPB500	5-27
A2YUPPB600	5-8
A2YUPPB700	5-14
A2YUPPB800	5-12
A2YUPPB900	5-4

Parts No.	Page No.
A2YUPPC001	8-29
A2YUPPC101	13-10
A2YUPPC200	6-6
A2YUPPC200	7-18
A2YUPPC200	9-7
A2YUPPC301	4-2
A2YUPPC400	10-5
A2YUPPC501	3-13
A2YUPPC600	4-3
A2YUPPC700	2-3
A2YUPPC700	15-5
A2YUPPC800	12-17
A2YUPPC900	2-5
A2YUPPD001	10-2
A2YUPPD100	12-21
A2YUPPD200	9-10
A2YUPPD300	6-5
A2YUPPD500	9-9
A2YUPPD600	6-20
A2YUPPD701	8-26
A2YUPPD702	8-26
A2YUPPD800	5-25
A2YUPPD900	5-28
A2YUPPE001	14-13
A2YUPPE101	5-13
A2YUPPE200	12-16
A2YUPPE300	12-4
A2YUPPE400	12-37
A2YUPPE500	2-10
A2YUPPE600	2-15
A2YUPPE700	7-19
A2YUPPE800	11-15
A2YUPPE900	13-7
A2YUPPF000	6-19
A2YUPPF100	10-20
A2YUPPF201	14-3
A2YUPPF300	3-26
A2YUPPF400	3-2
A2YUPPF500	3-23
A2YUPPF600	3-5

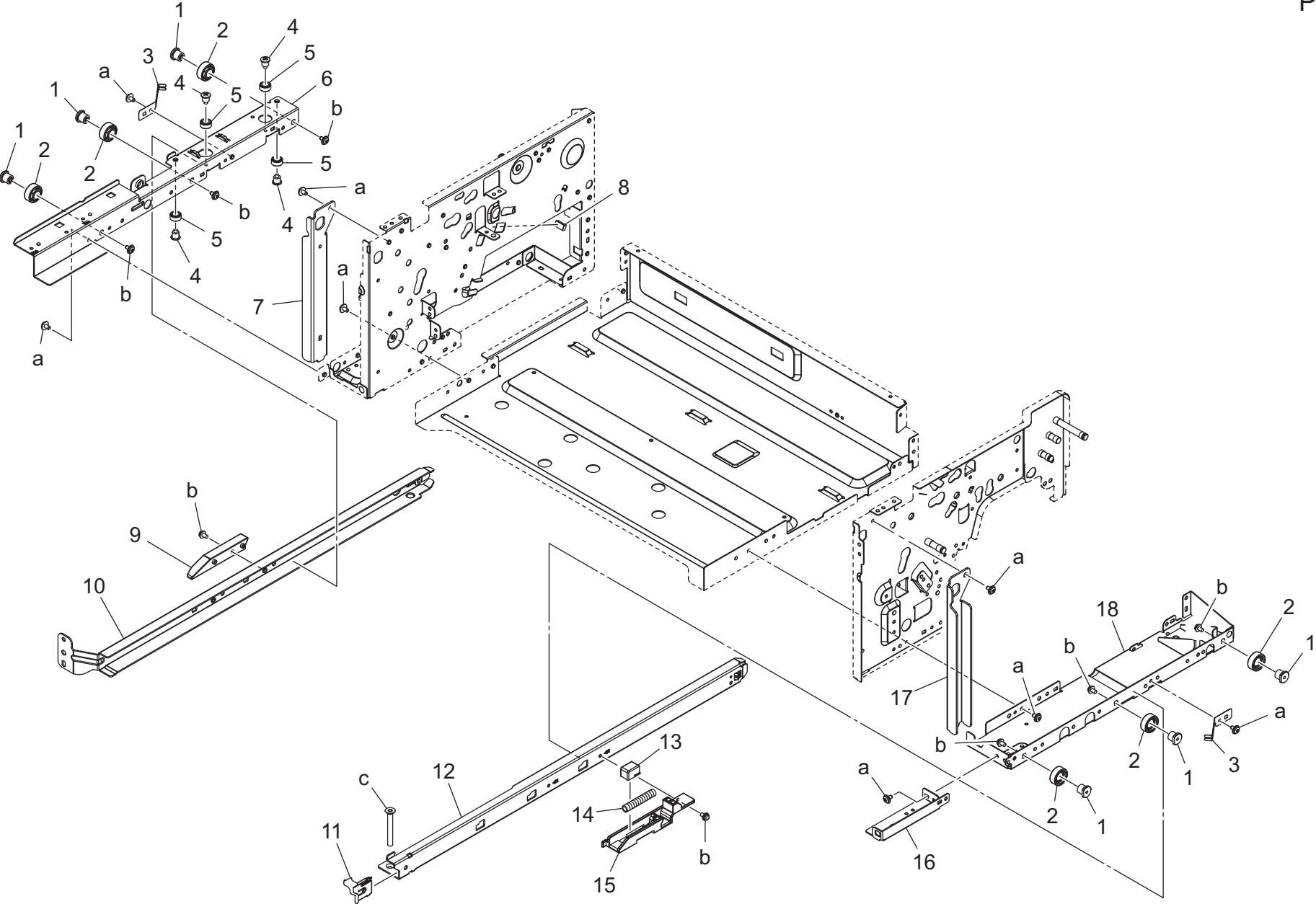
Parts No.	Page No.
A2YUPPF701	13-19
A2YUPPF800	13-6
A2YUPPF900	6-9
A2YUPPG100	5-26
A2YUPPG200	11-9
A2YUPPG300	11-8
A2YUPPG501	9-17
A2YUPPG601	8-9
A2YUPPG700	13-2
A2YUPPG801	15-1
A2YUPPG900	14-19
A2YUPPH000	7-1
A2YUPPH101	9-21
A2YUPPH200	14-4
A2YUPPH301	13-5
A2YUPPH400	11-11
A2YUPPH500	4-1
A2YUPPH601	8-1
A2YUPPH700	10-28
A2YUPPH800	13-1
A2YUPPH901	15-3
A2YUPPK001	6-14
A2YUPPK101	6-15
A2YUPPK200	14-12
A2YUPPK301	13-21
A2YUPPK401	13-9
A2YUPPK501	13-18
A2YUPPK600	14-5
A2YUPPK701	14-10
A2YUPPK801	14-8
A2YUPPK900	14-9
A2YUPPM001	14-6
A2YUPPM100	5-15
A2YUPPM200	8-27
A2YUPPM300	9-16
A2YUPPM400	6-11
A2YUPPM500	8-5
A2YUPPM601	5-16
A2YUPPM700	11-6
A2YUPPM800	11-7

Parts No.	Page No.
A2YUPPM900	7-23
A2YUPPN000	8-4
A2YUPPN100	8-6
A2YUPPN200	8-22
A2YUPPN301	13-12
A2YUPPN400	7-21
A2YUPPN500	7-22
A2YUPPN600	8-24
A2YUPPN700	13-24
A2YUPPN800	10-21
A2YUPPN900	10-18
A2YUPPP000	3-4
A2YUPPP100	4-9
A2YUPPP200	4-6
A2YUPPP300	12-15
A2YUPPP400	12-28
A2YUPPP500	12-22
A2YUPPP600	12-23
A2YUPPP700	4-15
A2YUPPP800	7-4
A2YUPPP800	8-10
A2YUPPP900	12-6
A2YUPPQ000	6-13
A2YUPPQ100	9-4
A2YUPPQ201	6-18
A2YUPPQ300	12-10
A2YUPPQ400	7-9
A2YUPPQ400	8-15
A2YUPPQ400	9-18
A2YUPPQ501	3-9
A2YUPPQ600	9-13
A2YUPPQ700	3-10
A2YUPPQ800	5-20
A2YUPPQ800	7-17
A2YUPPQ900	7-11
A2YUPPR000	5-23
A2YUPPR000	6-4
A2YUPPR000	7-12
A2YUPPR000	8-19
A2YUPPR100	9-12

Parts No.	Page No.
A2YUPPR200	10-10
A2YUPPR300	10-11
A2YUPPR500	13-15
A2YUPPR600	3-3
A2YUPPR700	1-2
A2YUPPR800	1-5
A2YUPPR900	13-14
A2YUPPS000	4-8
A2YUPPS100	1-1
A2YUPPS200	1-4
A2YUPPS200	4-10
A2YUPPS200	13-13
A2YUPPS300	4-4
A2YUPPS500	6-1
A2YUPPS500	7-10
A2YUPPS500	8-16
A2YUPPS500	9-15
A2YUPPS500	14-20
A2YUPPS600	5-18
A2YUPPS800	5-1
A2YUPPS800	10-9
A2YUPPS900	6-16
A2YUPPT000	10-27
A2YUPPT400	13-4
A2YUPPT700	12-24
A2YUPPT800	3-20
A2YUPPT800	8-11
A2YUPPT800	9-22
A2YUPPT800	10-14
A2YUPPT800	11-2
A2YUPPT900	16-3
A2YUPPU200	13-25
A2YUPPU300	8-28
A2YUPPU300	9-11
A2YUPPU400	3-11
A2YUPPU500	3-21
A2YUPPU500	5-24
A2YUPPU600	8-18
A2YUPPU700	5-19
A2YUPPU700	6-10

Parts No.	Page No.
A2YUPPU700	9-14
A2YUPPU800	8-7
A2YUPPU900	5-22
A2YUPPV000	7-8
A2YUPPV000	8-21
A2YUPPV100	6-3
A2YUPPV100	7-16
A2YUPPV200	3-8
A2YUPPV300	10-17
A2YUPPV400	9-1
A2YUPPV500	5-3
A2YUPPV600	8-23
A2YUPPV900	3-31
A2YUPPW000	3-22
A2YUPPW200	10-4
A2YUPPW300	14-2
A2YUPPW400	7-2
A2YUPPW400	8-14
A2YUPPW600	9-24
A2YUPPW600	11-10
A2YUPPW700	12-38
A2YUPPW800	12-20
A2YUPPW900	5-30
A2YUPPX001	5-29
A2YUPPX100	5-31
A2YUPPX200	6-8
A2YUPPX200	7-20
A2YUPPX200	8-20
A2YUPPX200	9-3
A2YUPPXN00	15-3
V500020099	16-1
V500020100	16-2

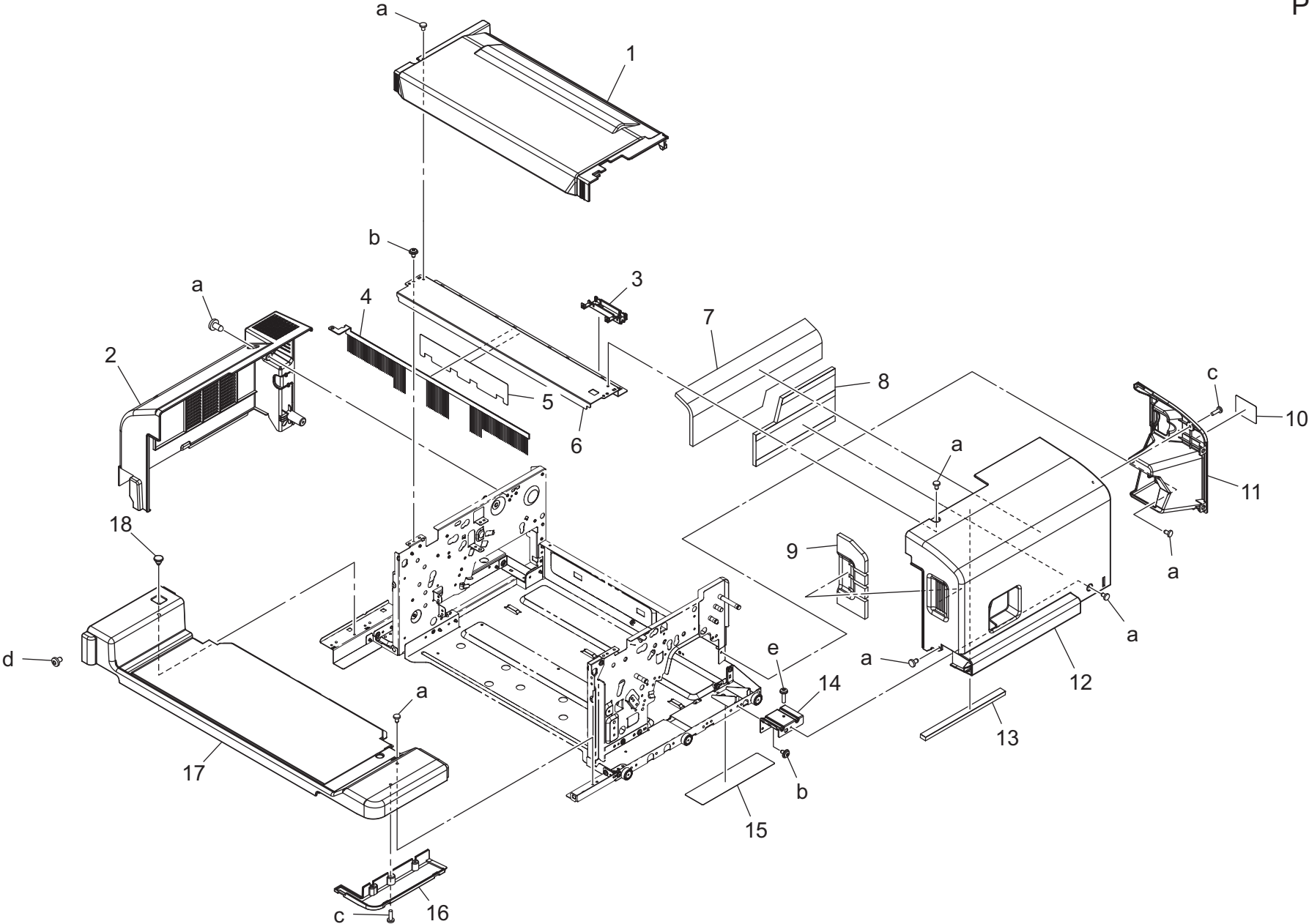
FRAME SECTION



FRAME SECTION

Key	Part No.	Description	Destinations	Class	QTY	Standard parts
1	A2YUPPS100	Shaft		C	6	a-A0U7PP1400 b-A2YUPPV800 c-A2YUPPU000
2	A2YUPPR700	Roll		C	6	
3	A2YUPP0801	Plate Spring		D	2	
4	A2YUPPS200	Shoulder Screw		D	4	
5	A2YUPPR800	Roll		C	4	
6	A2YUPP0300	Mounting Plate		D	1	
7	A2YUPP1101	Rail		D	1	
8	A2YUPP4700	Cushion		C	1	
9	A2YUPP5400	Holder		D	1	
10	A2YUPP0701	Rail		D	1	
11	A2YUPP6201	Cover		D	1	
12	A2YUPP0601	Rail		D	1	
13	A0U7PP9K01	HOLDER		C	1	
14	A0U7PPAX01	Pressing Spring		C	1	
15	A2YUPP5301	Holder		D	1	
16	A2YUPP0900	Mounting Plate		D	1	
17	A2YUPP1001	Rail		D	1	
18	A2YUPP0200	Mounting Plate		D	1	

EXTERNAL PARTS

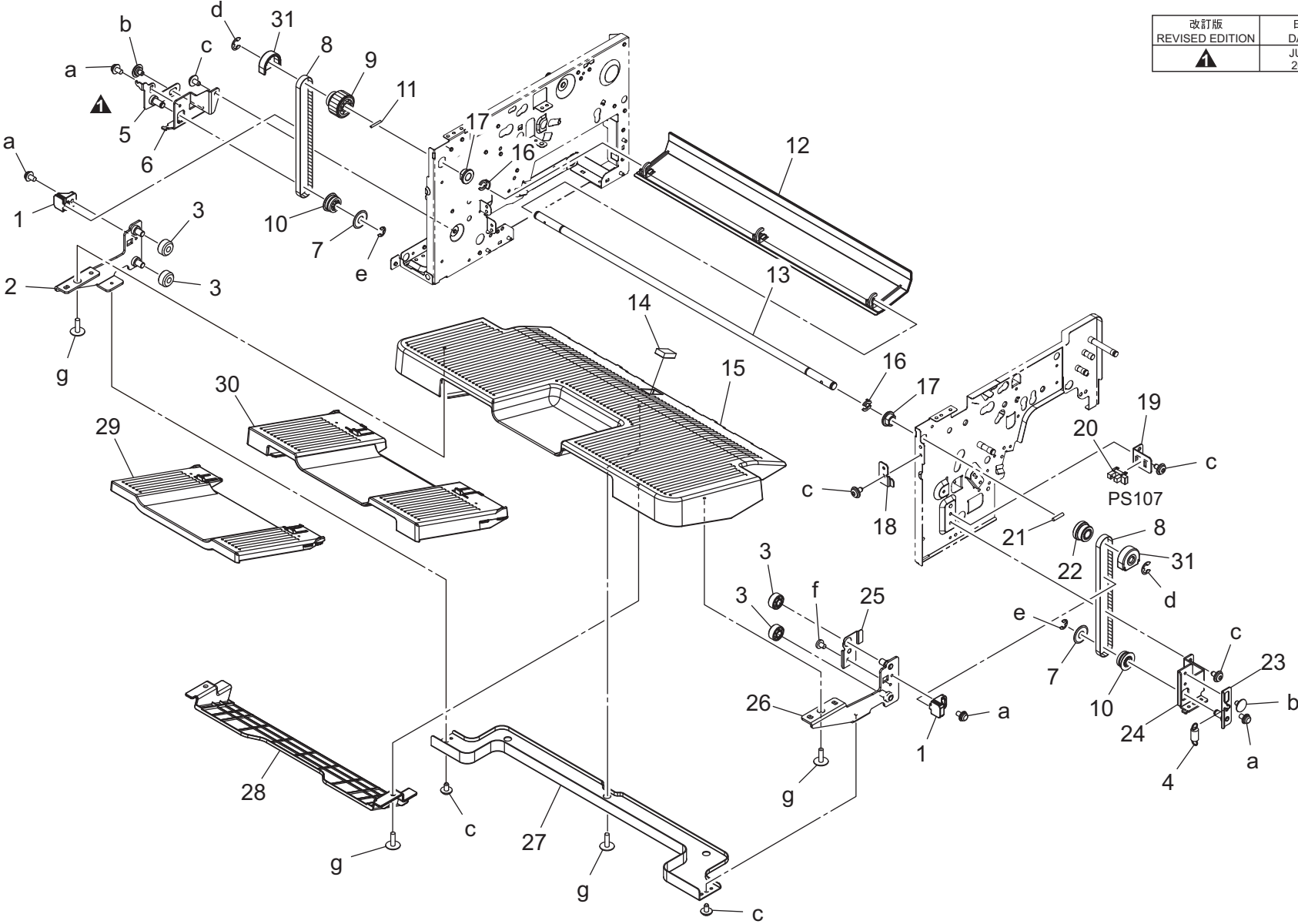


EXTERNAL PARTS

Key	Part No.	Description	Destinations	Class	QTY	Standard parts
1	A2YUPP5801	Cover/Upper		C	1	a-A0U7PPAH00 b-A0U7PP1400 c-A2YUPPV700 d-A0U7PP1600 e-A2YUPPW500
2	A2YUPP5701	Cover/Rear		C	1	
3	A2YUPPC700	Guide		D	1	
4	A2YUPP4002	Neutralizing Brush		C	1	
5	A2YUPPC900	Seal		D	1	
6	A2YUPP0501	Mounting Plate		D	1	
7	A2YUPP7900	Cushion		C	1	
8	A2YUPP4400	Cushion		C	1	
9	A2YUPP8100	Cushion		C	1	
10	A2YUPPE500	Label		C	1	
11	A2YUPP6000	Cover		C	1	
12	A2YUPP5600	Cover/Front		C	1	
13	A2YUPP8000	Cushion		C	1	
14	A2YUPP2001	Mounting Plate		D	1	
15	A2YUPPE600	Label		D	1	
16	A2YUPP7200	Cover		C	1	
17	A2YUPP6101	Cover		C	1	
18	A0U7PP8S01	Shoulder Screw		D	1	

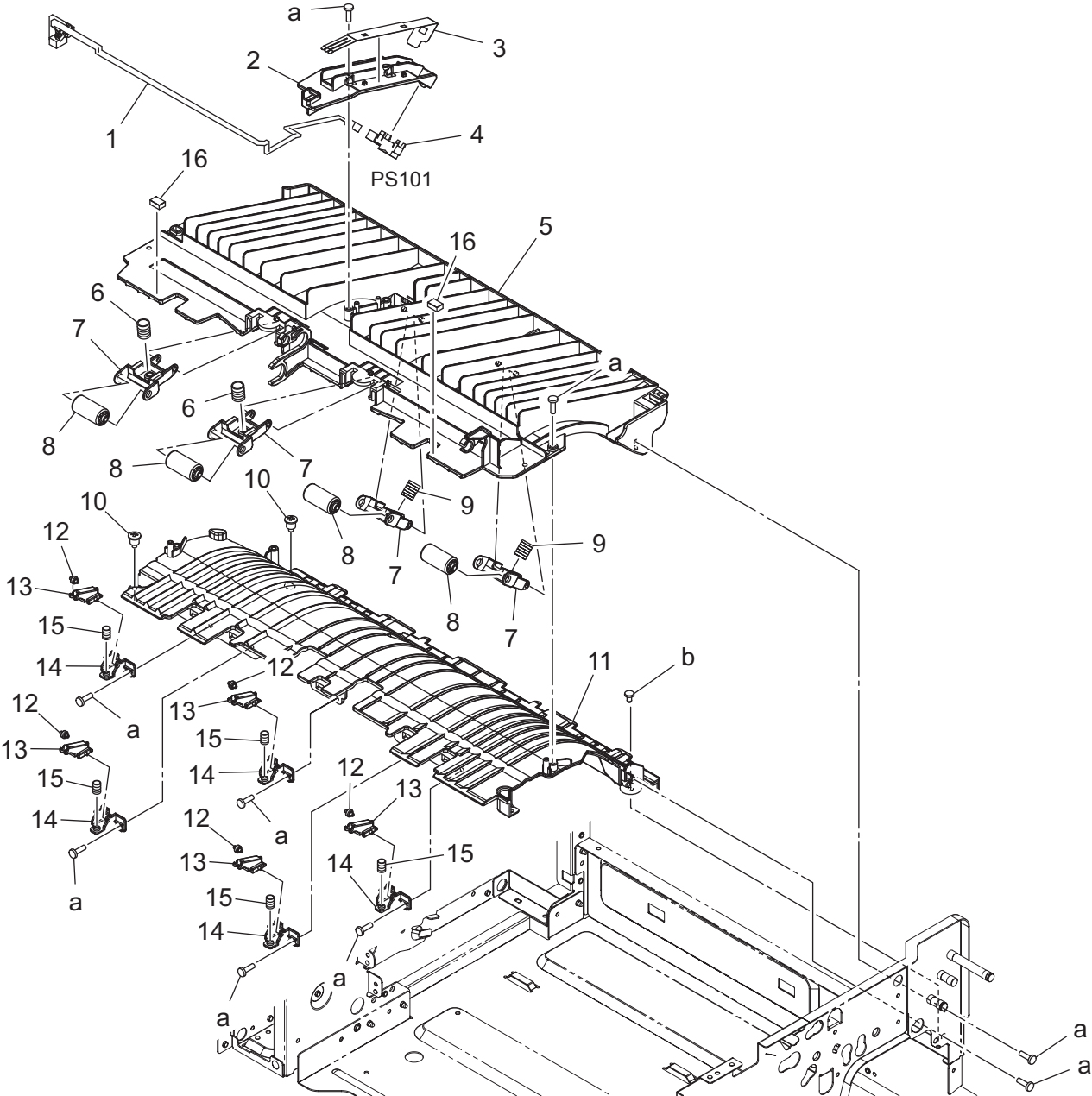
ELEVATE SECTION

改訂版 REVISED EDITION	日付 DATE
▲	JUNE 2015



Key	Part No.	Description	Destinations	Class	QTY	Standard parts
1	A2YUPP7400	Holder		D	2	a-A2YUPPV800 b-A2YUPPT200 c-A0U7PP1400 d-A0U7PP0F00 e-A0U7PP0E00 f-A0U7PP0100 g-A2YUPPT000
2	A2YUPPF400	Mounting Plate		D	1	
3	A2YUPPR600	Roller		C	4	
4	A2YUPPP000	Tension Spring		C	1	
5	A2YUPPF600	Mounting Plate		D	1	
6	A2YUPP1200	Mounting Plate		D	1	
7	4583439601	FLANGE		C	2	
8	A2YUPPV200	Timing Belt		C	2	
9	A2YUPPQ501	Gear 18/24T		C	1	
10	A2YUPPQ700	Pulley/18T		C	2	
11	A2YUPPU400	Pin		D	1	
12	A2YUPP7300	Cover		D	1	
13	A2YUPPC501	Shaft		D	1	
14	A2YUPP8200	Cushion		C	1	
15	A2YUPP6300	Tray		C	1	
16	A0U7PP0X00	STOPPER RING		C	2	
17	A0U7PP1300	BUSHING		C	2	
18	A2YUPP3600	Plate		D	1	
19	A2YUPP1300	Mounting Plate		D	1	
20	A2YUPPT800	Photointerrupter		I	1	
21	A2YUPPU500	Pin		D	1	
22	A2YUPPW000	Pulley/18T		C	1	
23	A2YUPPF500	Mounting Plate		D	1	
24	A2YUPP1600	Mounting Plate		D	1	
25	A2YUPP4501	Plate		D	1	
26	A2YUPPF300	Mounting Plate		D	1	
27	A2YUPP1500	Mounting Plate		D	1	
28	A2YUPP7100	Holder		D	1	
29	A2YUPP6501	Tray		C	1	
30	A2YUPP6401	Tray		C	1	
31	A2YUPPV900	Cover/Pulley		C	2	

PAPER FEED/TRANSPORT SECTION

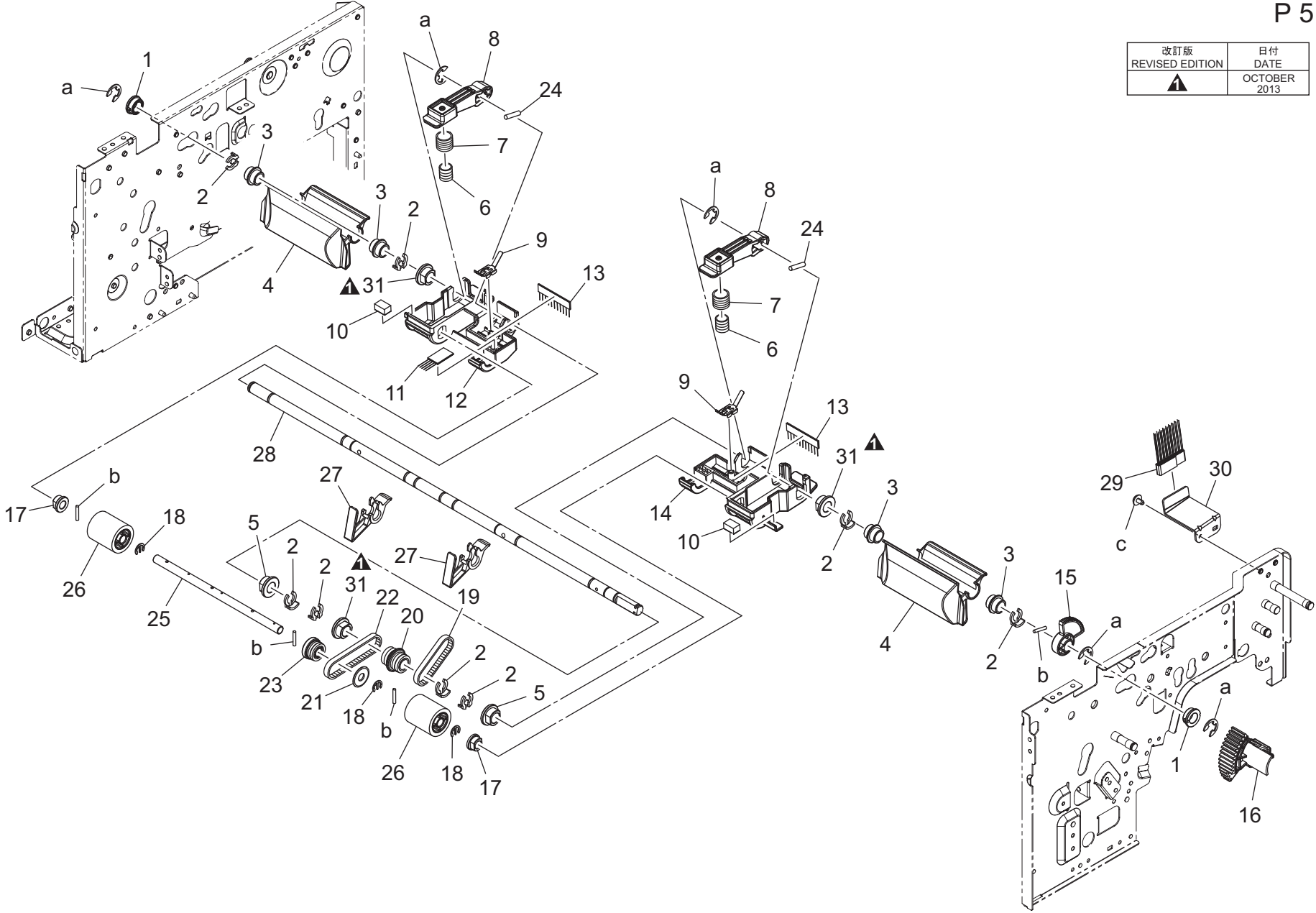


PAPER FEED/TRANSPORT SECTION

Key	Part No.	Description	Destinations	Class	QTY	Standard parts
1	A2YUPPH500	Harness		D	1	a-A2YUPPV700 b-A0U7PPAH00
2	A2YUPPC301	Guide		D	1	
3	A2YUPPC600	Plate Spring		D	1	
4	A2YUPPS300	Photoreflector		I	1	
5	A2YUPPA302	Guide		D	1	
6	A2YUPPP200	Pressing Spring		C	2	
7	A2YUPPA900	Holder		D	4	
8	A2YUPPS000	Roller		C	4	
9	A2YUPPP100	Pressing Spring		C	2	
10	A2YUPPS200	Shoulder Screw		D	2	
11	A2YUPPA402	Guide		D	1	
12	A0U7PP4A00	ROLLER		C	5	
13	A2YUPPB100	Holder		D	5	
14	A2YUPPB000	Holder		D	5	
15	A2YUPPP700	Pressing Spring		C	5	
16	A2YUPP4600	Cushion		C	2	

PAPER FEED/TRANSPORT SECTION

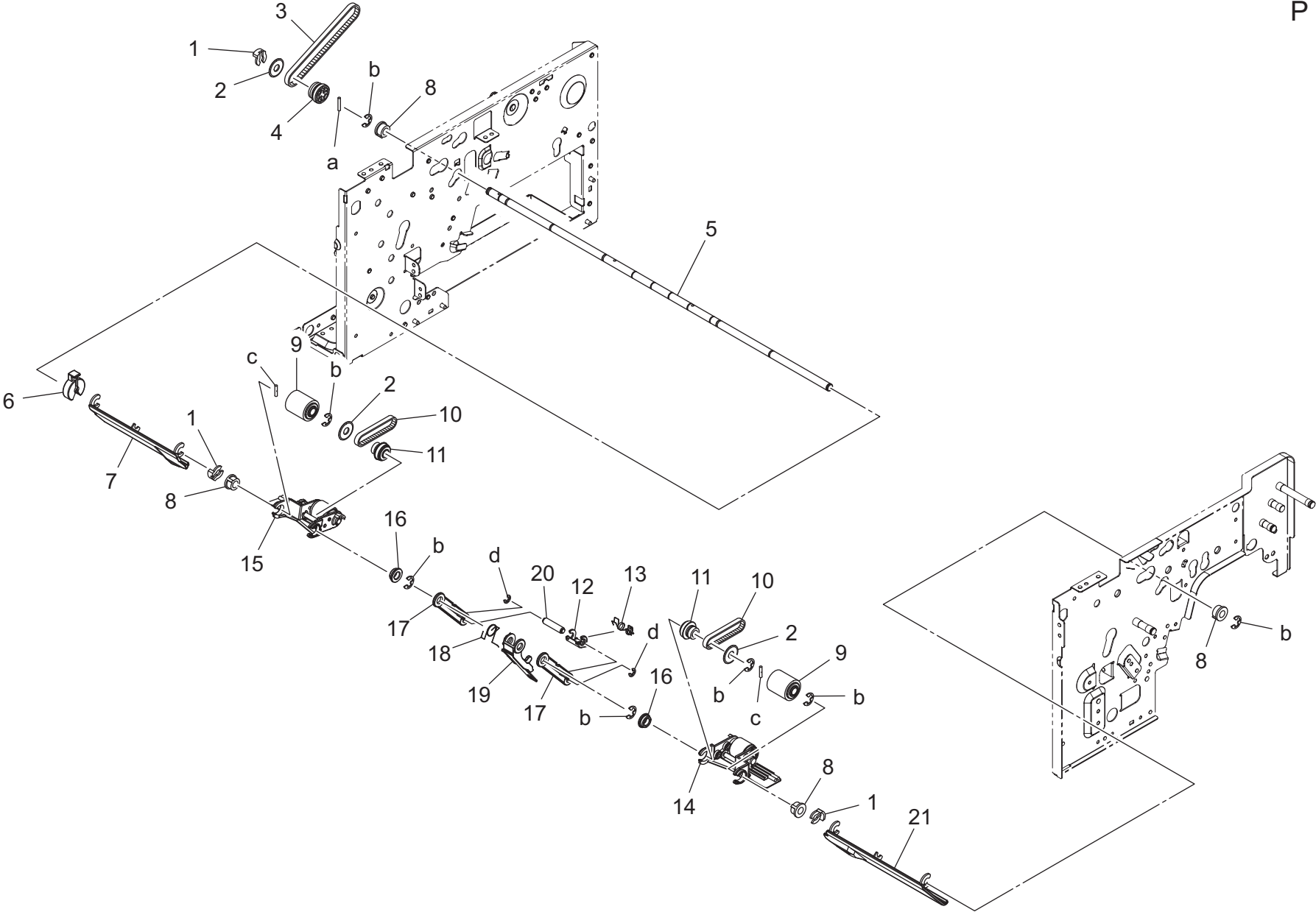
改訂版 REVISED EDITION	日付 DATE
▲	OCTOBER 2013



PAPER FEED/TRANSPORT SECTION

Key	Part No.	Description	Destinations	Class	QTY	Standard parts
1	A2YUPPS800	Bushing		D	2	a-A0U7PP0F00 b-V231201250 c-A0U7PP1400
2	A0U7PP0X00	STOPPER RING		C	8	
3	A2YUPPV500	Bushing		D	4	
4	A2YUPPB900	Guide		C	2	
5	A0U7PP1300	BUSHING		C	2	
6	A0U7PPB400	Pressing Spring		C	2	
7	A0U7PPB501	Pressing Spring		C	2	
8	A2YUPPB600	Lever		C	2	
9	A2YUPP3100	Plate Spring		D	2	
10	A2YUPP3900	Cushion		C	2	
11	A2YUPP3801	Neutralizing Brush		D	1	
12	A2YUPPB800	Guide		D	1	
13	A2YUPPE101	Neutralizing Brush		D	2	
14	A2YUPPB700	Guide		D	1	
15	A2YUPPM100	Gear		C	1	
16	A2YUPPM601	Gear		C	1	
17	A2YUPP4200	Bushing		D	2	
18	A2YUPPS600	Ring		D	3	
19	A2YUPPU700	Timing Belt		C	1	
20	A2YUPPQ800	Gear 22/22T		C	1	
21	A0U7PP1E00	FLANGE		D	1	
22	A2YUPPU900	Timing Belt		C	1	
23	A2YUPPR000	Gear 22T		C	1	
24	A2YUPPU500	Pin		D	2	
25	A2YUPPD800	Shaft		D	1	
26	A2YUPPG100	Roller		C	2	
27	A2YUPPB500	Lever		C	2	
28	A2YUPPD900	Shaft		D	1	
29	A2YUPPX001	Neutralizing Brush		D	1	
30	A2YUPPW900	Mounting Plate		D	1	
31	A2YUPPX100	Bushing		C	3	

PAPER FEED/TRANSPORT SECTION




PAPER FEED/TRANSPORT SECTION

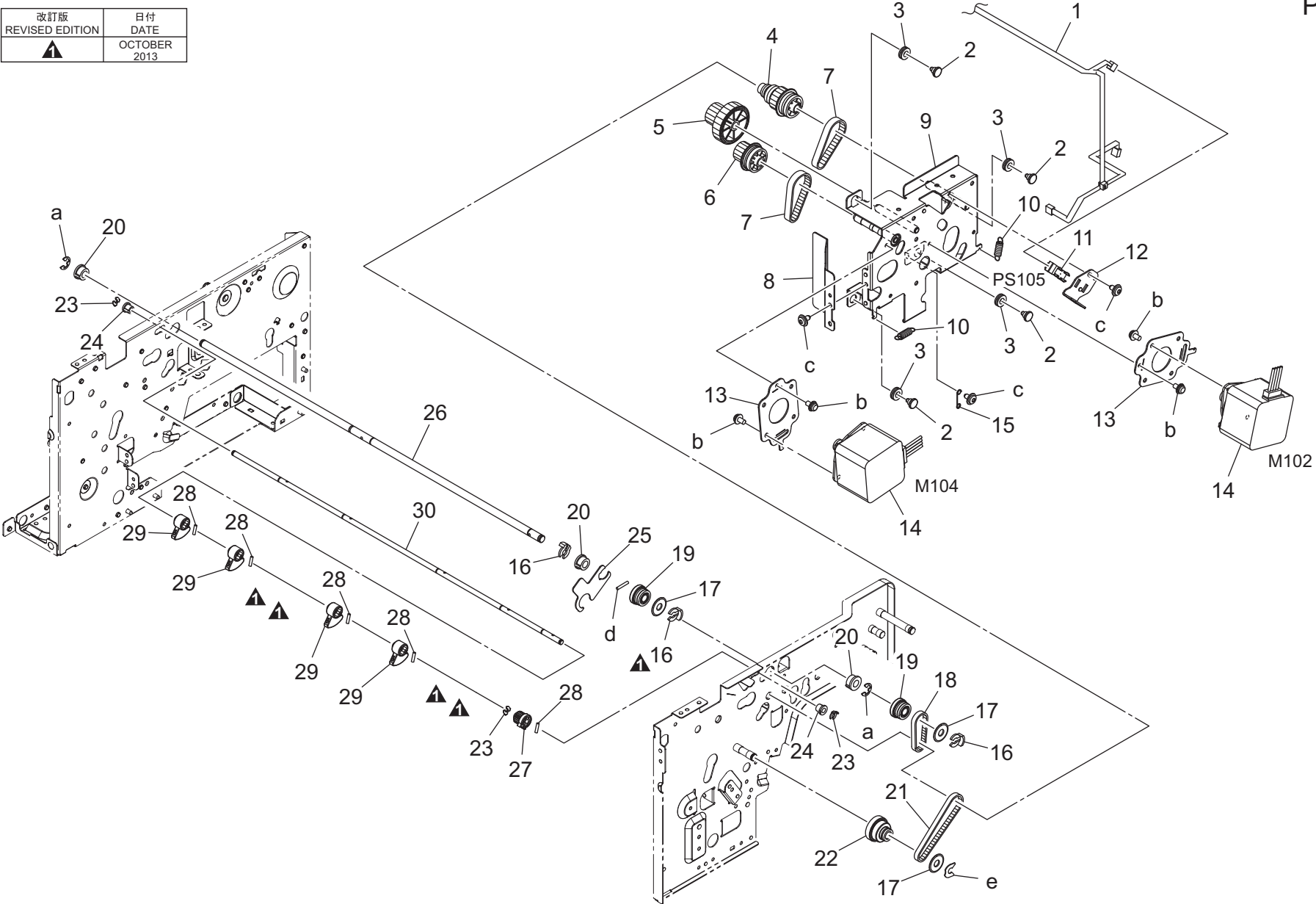
Key	Part No.	Description	Destinations	Class	QTY	Standard parts
1	A2YUPPS500	Stopper		C	3	a-V231201250 b-A0U7PP0E00 c-V231201050 d-V217030001
2	A0U7PP1E00	FLANGE		D	3	
3	A2YUPPV100	Timing Belt		C	1	
4	A2YUPPR000	Gear 22T		C	1	
5	A2YUPPD300	Shaft		D	1	
6	A2YUPPC200	Stopper		C	1	
7	A2YUPPA600	Guide		D	1	
8	A2YUPPX200	Bushing		D	4	
9	A2YUPPF900	Paper Feed Roller		C	2	
10	A2YUPPU700	Timing Belt		C	2	
11	A2YUPPM400	Gear 16/26T		C	2	
12	A2YUPPB200	Holder		C	1	
13	A2YUPPQ000	Torsion Spring		C	1	
14	A2YUPPK001	Roller Assy		B	1	
15	A2YUPPK101	Roller Assy		B	1	
16	A2YUPPS900	Bushing		D	2	
17	A2YUPPA800	Arm		C	2	
18	A2YUPPQ201	Torsion Spring		C	1	
19	A2YUPPF000	Weight		C	1	
20	A2YUPPD600	Shaft		D	1	
21	A2YUPPA500	Guide		D	1	

PAPER FEED/TRANSPORT SECTION

Key	Part No.	Description	Destinations	Class	QTY	Standard parts
1	A2YUPPH000	Harness		D	1	a-A2YUPPV800 b-A0U7PP1400 c-V231201250 d-A0U7PP0E00
2	A2YUPPW400	Motor		C	1	
3	A2YUPP2800	Mounting Plate		D	1	
4	A2YUPPP800	Tension Spring		C	1	
5	A0U7PP8S01	Shoulder Screw		D	3	
6	A0U7PPAK00	Rubber		D	3	
7	A2YUPP2700	Mounting Plate		D	1	
8	A2YUPPV000	Timing Belt		C	1	
9	A2YUPPQ400	Spring		D	1	
10	A2YUPPS500	Stopper		C	2	
11	A2YUPPQ900	Gear 31T		C	1	
12	A2YUPPR000	Gear 22T		C	1	
13	A0U7PP1E00	FLANGE		D	1	
14	A0U7PP0X00	STOPPER RING		C	1	
15	4583439601	FLANGE		C	1	
16	A2YUPPV100	Timing Belt		C	1	
17	A2YUPPQ800	Gear 22/22T		C	1	
18	A2YUPPC200	Stopper		C	1	
19	A2YUPPE700	Roller		C	1	
20	A2YUPPX200	Bushing		D	2	
21	A2YUPPN400	Gear 27T		C	1	
22	A2YUPPN500	Gear 22T		C	2	
23	A2YUPPM900	Knob		C	1	

PAPER FEED/TRANSPORT SECTION

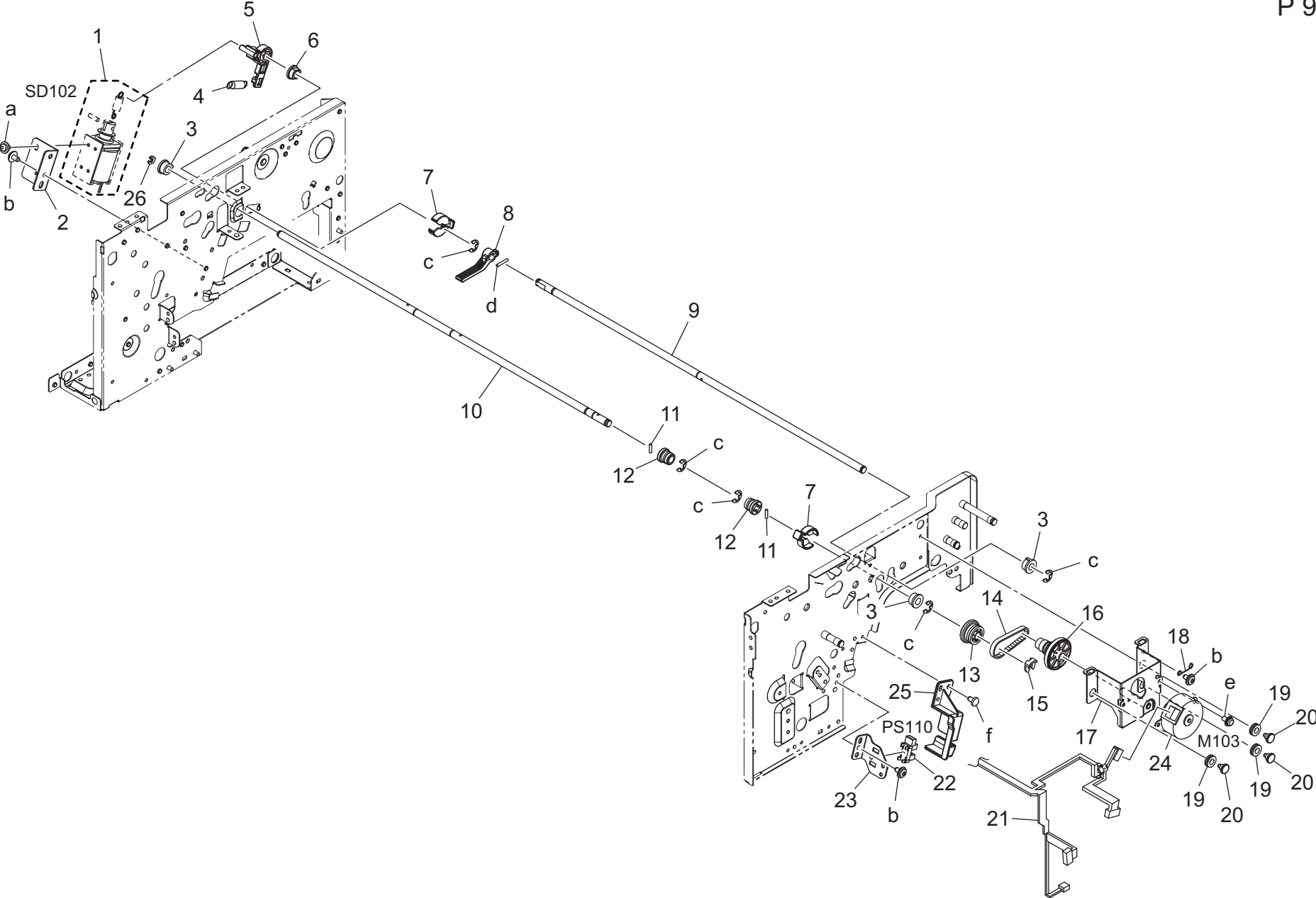
改訂版 REVISED EDITION	日付 DATE
	OCTOBER 2013



PAPER FEED/TRANSPORT SECTION

Key	Part No.	Description	Destinations	Class	QTY	Standard parts
1	A2YUPPH601	Harness		D	1	a-A0U7PP0E00 b-A2YUPPV800 c-A0U7PP1400 d-V231201250 e-A0U7PP0V00
2	A0U7PP8S01	Shoulder Screw		D	4	
3	A0U7PPAK00	Rubber		D	4	
4	A2YUPPN000	Gear 18/25/31T		C	1	
5	A2YUPPM500	Gear 16/40T		C	1	
6	A2YUPPN100	Gear 18/33T		C	1	
7	A2YUPPU800	Timing Belt		C	2	
8	A2YUPP8400	Sound Shield Plate		D	1	
9	A2YUPPG601	Mounting Plate		D	1	
10	A2YUPPP800	Tension Spring		C	2	
11	A2YUPPT800	Photointerrupter		I	1	
12	A2YUPP3300	Mounting Plate		D	1	
13	A2YUPP2800	Mounting Plate		D	2	
14	A2YUPPW400	Motor		C	2	
15	A2YUPPQ400	Spring		D	1	
16	A2YUPPS500	Stopper		C	3	
17	A0U7PP1E00	FLANGE		D	3	
18	A2YUPPU600	Timing Belt		C	1	
19	A2YUPPR000	Gear 22T		C	2	
20	A2YUPPX200	Bushing		D	3	
21	A2YUPPV000	Timing Belt		C	1	
22	A2YUPPN200	Gear 17/24T		C	1	
23	A2YUPPV600	Stopper		C	3	
24	A2YUPPN600	Bushing		D	2	
25	A2YUPP3700	Plate		D	1	
26	A2YUPPD701Old	Shaft		D	1	
26	A2YUPPD702	Shaft		D	1	
27	A2YUPPM200	Gear 18T		C	1	
28	A2YUPPU300	Pin		D	5	
29	A2YUPPC001	Cam		C	4	
30	A2YUPPB402	Shaft		D	1	

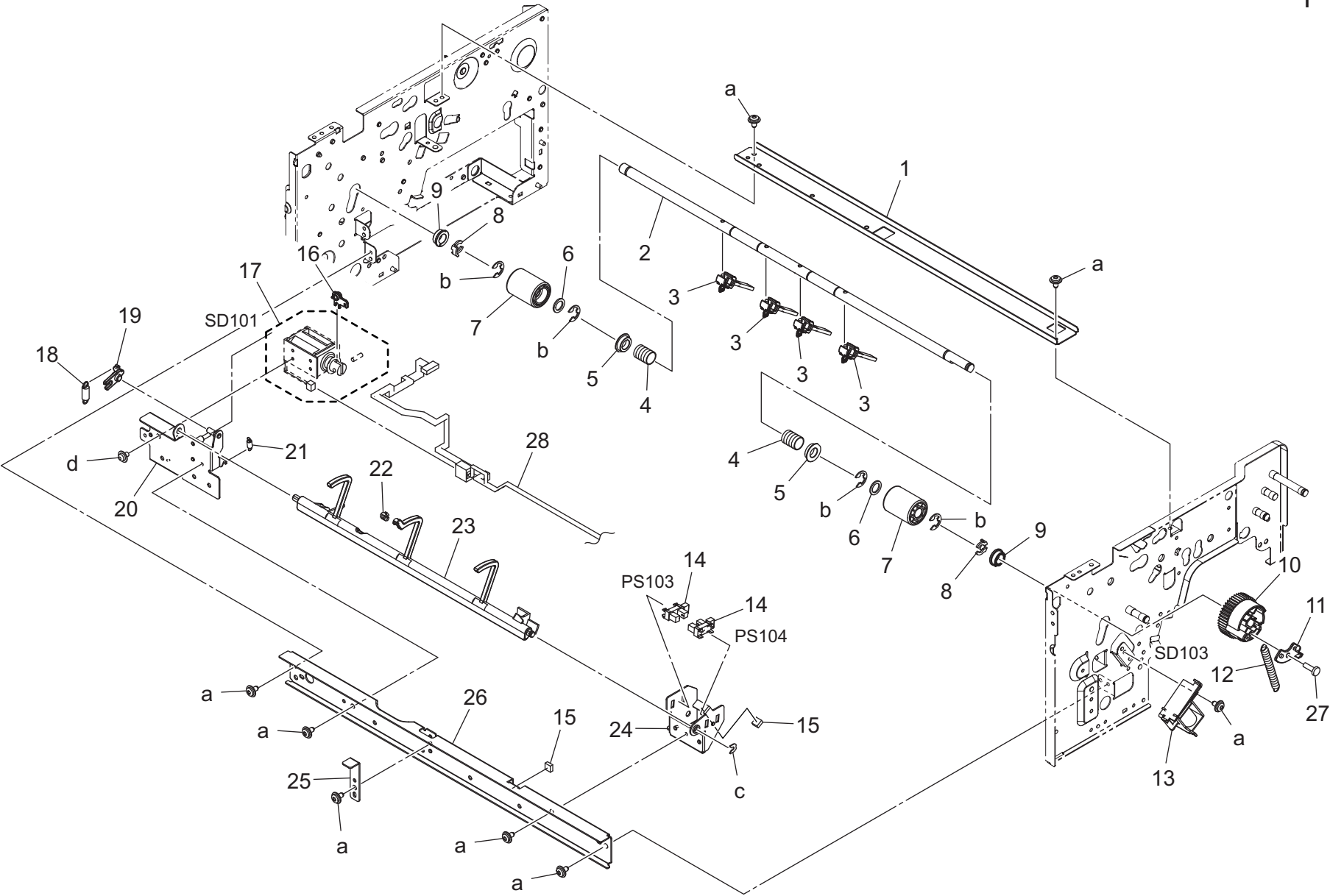
PAPER FEED/TRANSPORT SECTION



PAPER FEED/TRANSPORT SECTION

Key	Part No.	Description	Destinations	Class	QTY	Standard parts
1	A2YUPPV400	SOLENOID Assy		C	1	a-A2YUPPU100 b-A0U7PP1400 c-A0U7PP0E00 d-V231201250 e-A2YUPPV800 f-A0U7PPAH00
2	A2YUPP3000	Mounting Plate		D	1	
3	A2YUPPX200	Bushing		D	3	
4	A2YUPPQ100	Tension Spring		D	1	
5	A2YUPPB300	Lever		C	1	
6	A2YUPP4200	Bushing		D	1	
7	A2YUPPC200	Stopper		C	2	
8	A2YUPPA700	Lever		C	1	
9	A2YUPPD500	Shaft		D	1	
10	A2YUPPD200	Shaft		D	1	
11	A2YUPPU300	Pin		D	2	
12	A2YUPPR100	Gear 16/26T		C	2	
13	A2YUPPQ600	Gear 26T		C	1	
14	A2YUPPU700	Timing Belt		C	1	
15	A2YUPPS500	Stopper		C	1	
16	A2YUPPM300	Gear 17/54T		C	1	
17	A2YUPPG501	Mounting Plate		D	1	
18	A2YUPPQ400	Spring		D	1	
19	A0U7PPAK00	Rubber		D	3	
20	A0U7PP8S01	Shoulder Screw		D	3	
21	A2YUPPH101	Harness		D	1	
22	A2YUPPT800	Photointerrupter		I	1	
23	A2YUPP3300	Mounting Plate		D	1	
24	A2YUPPW600	Motor		C	1	
25	A2YUPP8300	Cover		D	1	
26	A0U7PP0U00	STOPPER RING		D	1	

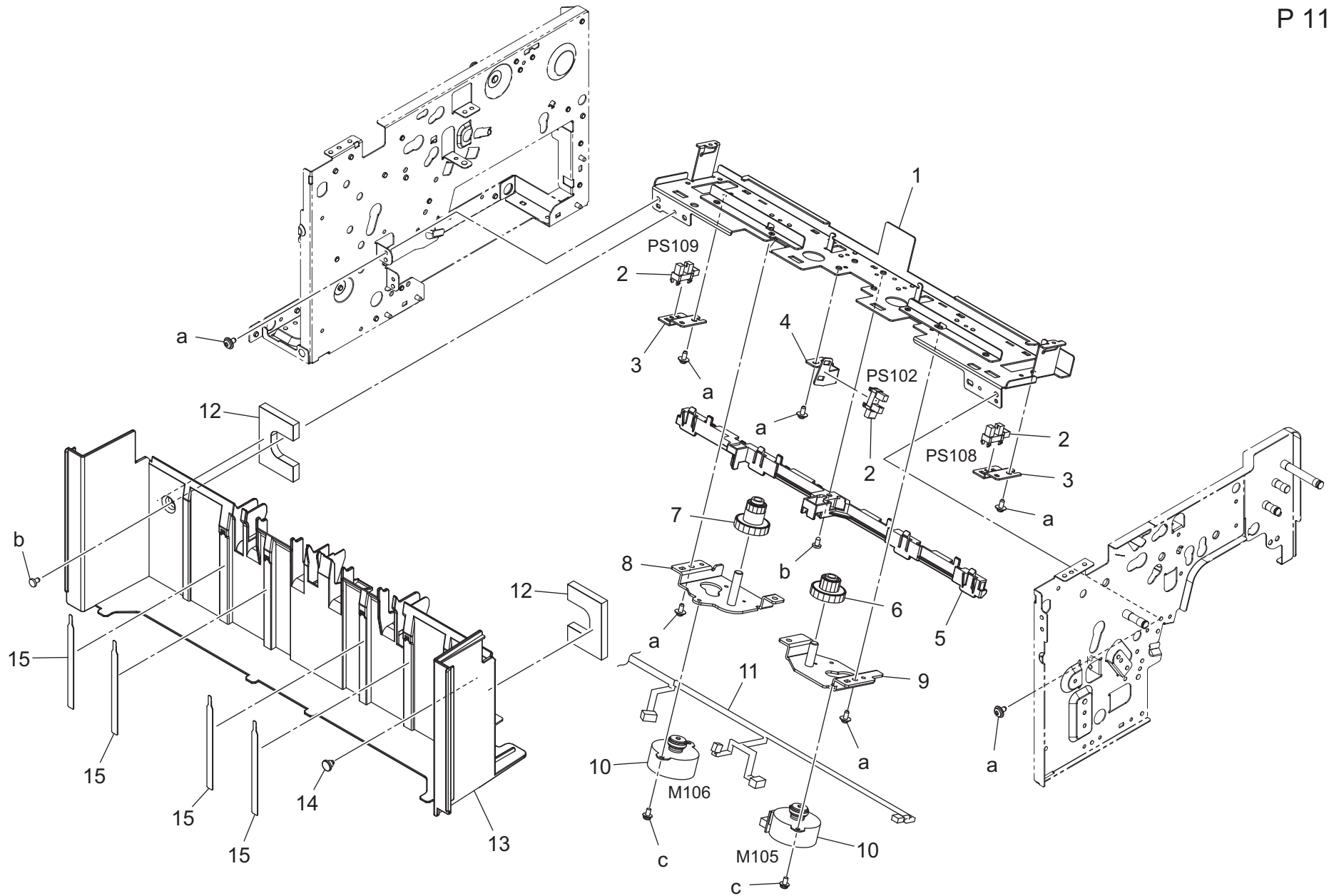
PAPER FEED/TRANSPORT SECTION



PAPER FEED/TRANSPORT SECTION

Key	Part No.	Description	Destinations	Class	QTY	Standard parts
1	A2YUPP1900	Reinforce Plate		D	1	a-A0U7PP1400 b-A0U7PP0F00 c-A01FPP0W00 d-A2YUPPU100
2	A2YUPPD001	Shaft		D	1	
3	A0U7PP2R00	PADDLE ASSY		C	4	
4	A2YUPPW200	Pressing Spring		C	2	
5	A2YUPPC400	Bushing		C	2	
6	A0U7PPCB00	Collar		C	2	
7	A2YUPPA000	Roll		C	2	
8	A0U7PP0X00	STOPPER RING		C	2	
9	A2YUPPS800	Bushing		D	2	
10	A2YUPPR200	Gear 43T		C	1	
11	A2YUPPR300	Paddle		C	1	
12	A0U7PP1U00	TENSION SPRING		D	1	
13	A0U7PPA500	Solenoid		C	1	
14	A2YUPPT800	Photointerrupter		I	2	
15	A0U7PP2J00	CUSHION		C	2	
16	A2YUPP6800	Lever		C	1	
17	A2YUPPV300	SOLENOID Assy		C	1	
18	A2YUPPN900	Tension Spring		D	1	
19	A2YUPP6700	Lever		C	1	
20	A2YUPPF100	Mounting Plate		D	1	
21	A2YUPPN800	Tension Spring		D	1	
22	A0U7PP1G00	CUSHION		C	1	
23	A2YUPP6600	Lever		C	1	
24	A2YUPP1400	Mounting Plate		D	1	
25	A2YUPP4100	Plate		D	1	
26	A2YUPP1700	Mounting Plate		D	1	
27	A2YUPPT000	Screw		C	1	
28	A2YUPPH700	Harness		D	1	

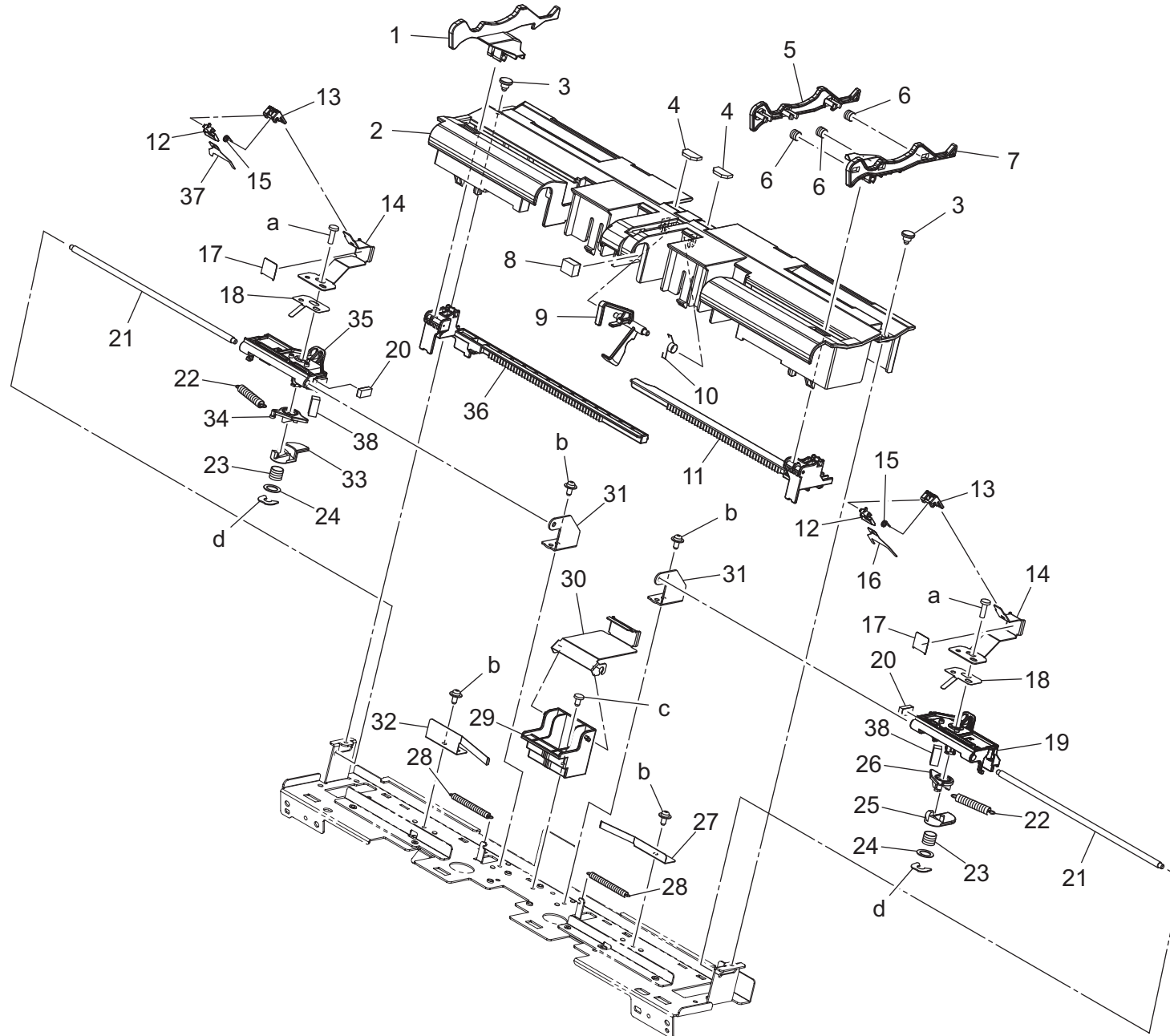
ADJUSTMENT SECTION



ADJUSTMENT SECTION

Key	Part No.	Description	Destinations	Class	QTY	Standard parts
1	A2YUPP2202	Mounting Plate		D	1	a-A0U7PP1400 b-A0U7PPAH00 c-A2YUPPV800
2	A2YUPPT800	Photointerrupter		I	3	
3	A2YUPP2501	Mounting Plate		D	2	
4	A2YUPP3400	Mounting Plate		D	1	
5	A2YUPPA200	Guide		D	1	
6	A2YUPPM700	Gear 16/49T		C	1	
7	A2YUPPM800	Gear 16/49T		C	1	
8	A2YUPPG300	Mounting Plate		D	1	
9	A2YUPPG200	Mounting Plate		D	1	
10	A2YUPPW600	Motor		C	2	
11	A2YUPPH400	Harness		D	1	
12	A2YUPP7800	Cushion		C	2	
13	A2YUPP5901	Cover		D	1	
14	A0U7PP8S01	Shoulder Screw		D	1	
15	A2YUPPE800	Sheet		C	4	

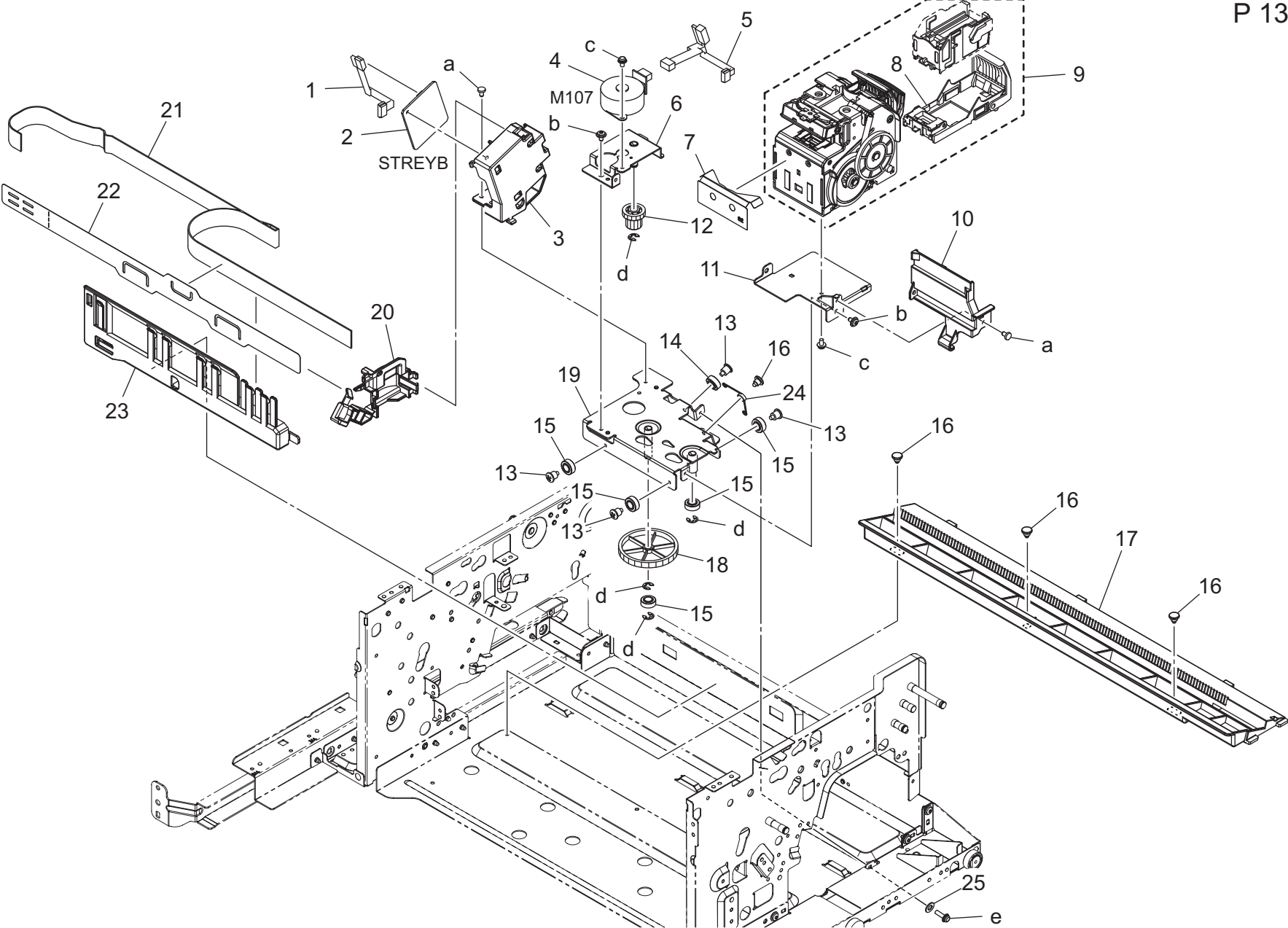
ADJUSTMENT SECTION



ADJUSTMENT SECTION

Key	Part No.	Description	Destinations	Class	QTY	Standard parts
1	A2YUPP8800	Regulating Plate		C	1	a-A2YUPPV700 b-A0U7PP1400 c-A0U7PPAH00 d-A0U7PP0V00
2	A2YUPP8500	Tray		D	1	
3	A0U7PP8S01	Shoulder Screw		D	2	
4	A2YUPPE300	Pad		C	2	
5	A2YUPP8700	Guide		C	1	
6	A2YUPPP900	Pressure Spring		D	3	
7	A2YUPP8600	Regulating Plate		C	1	
8	A2YUPP4300	Cushion		C	1	
9	A2YUPPA100	Actuator		C	1	
10	A2YUPPQ300	Torsion Spring		C	1	
11	A2YUPP8900	Rack		D	1	
12	A2YUPP9900	Lever		C	2	
13	A2YUPP9800	Holder		D	2	
14	A2YUPP2301	Stopper		D	2	
15	A2YUPPP300	Torsion Spring		C	2	
16	A2YUPPE200	Sheet		C	1	
17	A2YUPPC800	Sheet		D	2	
18	A2YUPP2600	Stopper		D	2	
19	A2YUPP9202	Holder		D	1	
20	A2YUPPW800	Cushion		C	2	
21	A2YUPPD100	Shaft		D	2	
22	A2YUPPP500	Tension Spring		D	2	
23	A2YUPPP600	Pressure Spring		D	2	
24	A2YUPPT700	Spacer		D	2	
25	A2YUPP9600	Lever		D	1	
26	A2YUPP9401	Lever		D	1	
27	A2YUPP2900	Plate Spring		D	1	
28	A2YUPPP400	Tension Spring		D	2	
29	A2YUPP9101	Holder		D	1	
30	A2YUPP2401	Stopper		D	1	
31	A2YUPP3200	Mounting Plate		D	2	
32	A2YUPP3500	Plate Spring		D	1	
33	A2YUPP9700	Lever		D	1	
34	A2YUPP9501	Lever		D	1	
35	A2YUPP9302	Holder		D	1	
36	A2YUPP9000	Rack		D	1	
37	A2YUPPE400	Sheet		C	1	
38	A2YUPPW700	Cushion		C	2	

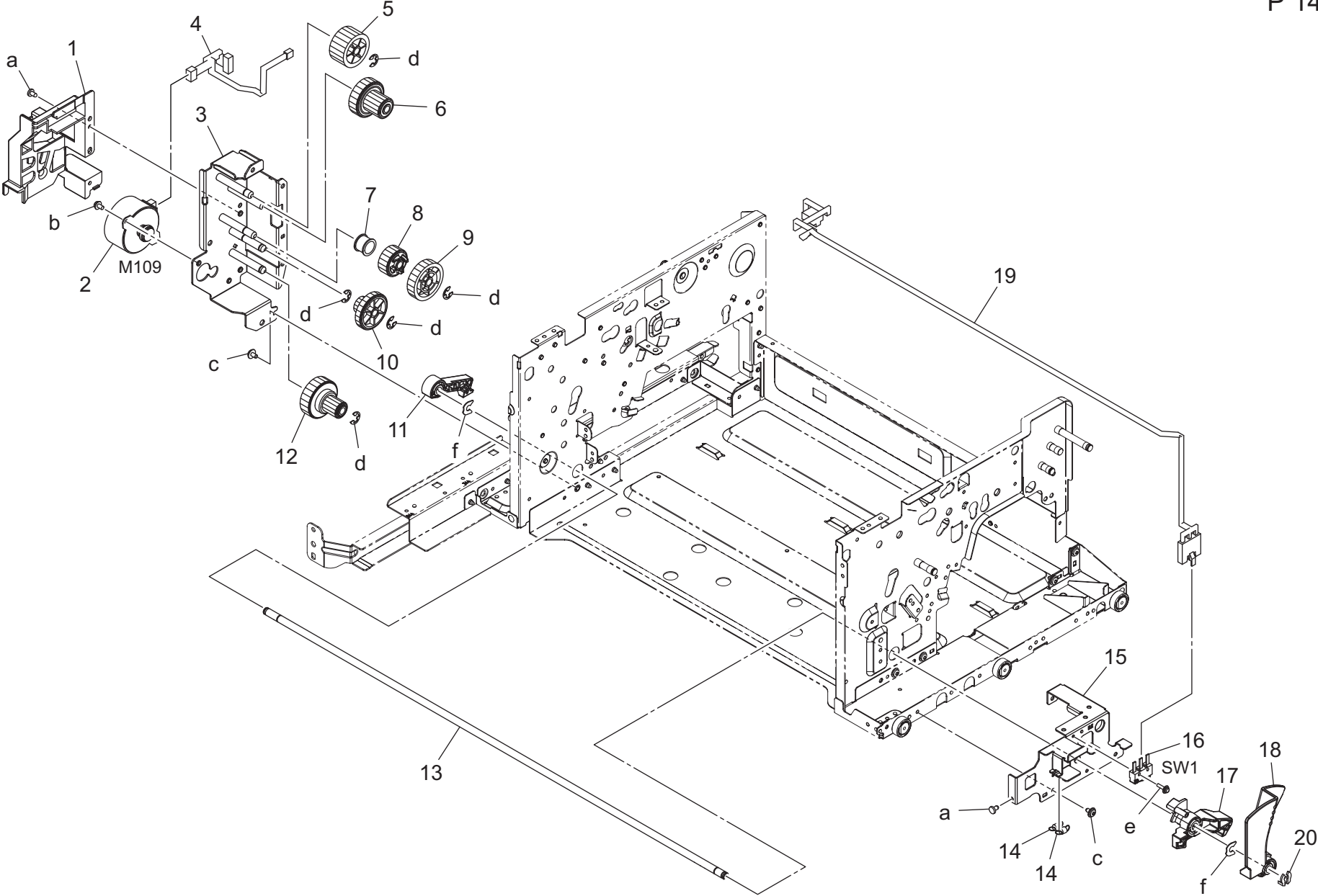
STAPLER SECTION

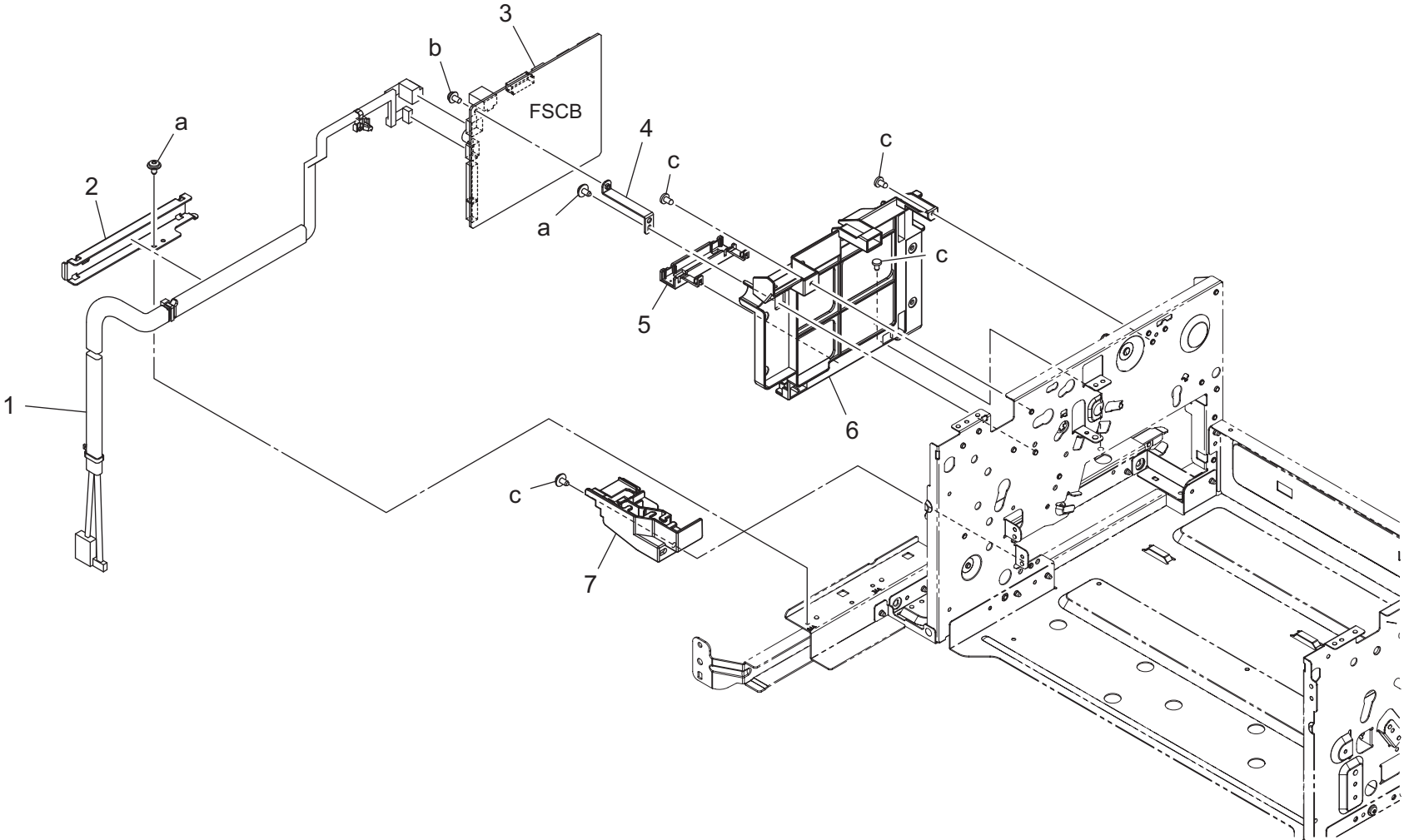


STAPLER SECTION

Key	Part No.	Description	Destinations	Class	QTY	Standard parts
1	A2YUPPH800	Harness		D	1	a-A0U7PPAH00 b-A0U7PP1400 c-A2YUPPV800 d-A2YUPPS400 e-A2YUPP0000
2	A2YUPPG700	PWB Assembly		C	1	
3	A2YUPP5000	Holder		D	1	
4	A2YUPPT400	Motor		C	1	
5	A2YUPPH301	Harness		D	1	
6	A2YUPPF800	Mounting Plate		D	1	
7	A2YUPPE900	Guide		C	1	
8	9J08P00100	STAPLE CARTRIDGE		C	1	
9	A2YUPPK401	Stapler Unit		C	1	
10	A2YUPPC101	Holder		D	1	
11	A2YUPP0101	Mounting Plate		D	1	
12	A2YUPPN301	Gear 24/35T		C	1	
13	A2YUPPS200	Shoulder Screw		D	3	
14	A2YUPPR900	Roll		C	1	
15	A2YUPPR500	Roll		C	4	
16	A0U7PP8S01	Shoulder Screw		D	4	
17	A2YUPP4801	Rail		D	1	
18	A2YUPPK501	Gear 14/94T		C	1	
19	A2YUPPF701	Mounting Plate		D	1	
20	A2YUPP4900	Guide		D	1	
21	A2YUPPK301	Flatcable		D	1	
22	A2YUPP7000	Guide		D	1	
23	A2YUPP6900	Holder		D	1	
24	A2YUPPN700	Torsion Spring		C	1	
25	A2YUPPU200	Washer		D	1	

DRIVE SECTION



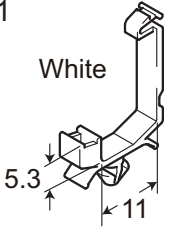
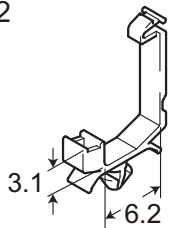
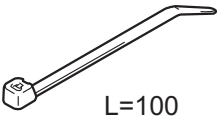


ELECTRICAL COMPONENTS

Key	Part No.	Description	Destinations	Class	QTY	Standard parts
1	A2YUPPG801	Harness		D	1	a-A0U7PP1400 b-A2YUPPT100 c-A0U7PPAH00
2	A2YUPP1800	Guide		D	1	
3	A2YUPPH901	PWB Assembly	(Model No. A2YU-WY1)	I	1	
3	A2YUPPXN00	PWB Assembly	(Model No. A2YU-WY2)	I	1	
4	A2YUPP7500	Mounting Plate		D	1	
5	A2YUPPC700	Guide		D	1	
6	A2YUPP7701	Holder		D	1	
7	A2YUPP7601	Holder		D	1	

WIRING ACCESSORIES AND JIGS

P 16

<p>1</p>  <p>White</p> <p>5.3</p> <p>11</p>	6	11	16	21	26	31	36
<p>2</p>  <p>3.1</p> <p>6.2</p>	7	12	17	22	27	32	37
<p>3</p>  <p>L=100</p>	8	13	18	23	28	33	38
4	9	14	19	24	29	34	39
5	10	15	20	25	30	35	40

WIRING ACCESSORIES AND JIGS

Key	Part No.	Description	Destinations	Class	QTY	Standard parts
1	V500020099	Mini Locking wire saddle		D		
2	V500020100	Mini Locking wire saddle		D		
3	A2YUPPT900	Cable Tie		D		

MAINTENANCE LIST

● The items with no Page/Key numbers are not handled as spare parts.

No.	Section	PM Parts Description	Maintenance Cycle (K=1,000)		Parts No.	Destinations	Page/Key	Note
			QTY	Replace				
1	FS-533	Alignment roller assy/F	1	1000K	A2YUPPK001		P6-14	*1*2
2		Alignment roller assy/R	1	1000K	A2YUPPK101		P6-15	*1*2

*1: Actual durable cycle (life counter value)

*2: Replace those parts at the same time.

メンテナンスリスト

● ページ / キーナンバーのないものは、アフターサービス部品ではありません。

No.	区分	PM 部品名称	サイクル (K=1,000)		部品番号	仕向地	頁 / キー	備考
			員数	交換				
1	FS-533	整合ローラー Assy/F	1	1000K	A2YUPPK001		P6-14	*1*2
2		整合ローラー Assy/R	1	1000K	A2YUPPK101		P6-15	*1*2

*1: 実質交換サイクル値 (ライフカウンター値)

*2: 同時交換する。

DESTINATION

Destination No.		Destinations		V	Hz	Model No.
A	A1	JAPAN		100	50/60	A2YUWY1/ A2YUWY2
	A2	JAPAN				
B		USA, CANADA		120	60	A2YUWY1/ A2YUWY2
C		EUROPEAN TYPE		220-240	50/60	A2YUWY1/ A2YUWY2
D	D1	S.E ASIA TYPE	THAILAND, SRI LANKA, SINGAPORE, MALAYSIA, HONG KONG, PAKISTAN, INDIA, BANGLADESH, INDONESIA	220-240	50/60	A2YUWY1/ A2YUWY2
	D3	OCEANIA TYPE	AUSTRALIA, NEW ZEALAND	220-240	50/60	A2YUWY1/ A2YUWY2
E		PHILIPPINES		220-240	50/60	A2YUWY1/ A2YUWY2
F	F1	SAUDI ARABIA				
	F2	SAUDI ARABIA		220-240	50/60	A2YUWY1/ A2YUWY2
G	G1	C.S AMERICA		220-240	50/60	A2YUWY1/ A2YUWY2
	G2	C.S AMERICA		120	60	A2YUWY1/ A2YUWY2
H		TAIWAN		110	60	A2YUWY1
I		JORDAN, LEBANON, SYRIA, SOUTH AFRICA, IRAQ, IRAN, N.YEMEN, CAMEROON, UAE, BAHRAIN, OMAN, QATAR, KUWAIT, KENYA, TUNISIA, IVORY COAST, MOROCCO		220-240	50/60	A2YUWY1/ A2YUWY2
J		CHINA		220-240	50/60	A2YUWY1

Destination No.	Destinations	V	Hz	Model No.
K	KOREA	220-240	50/60	A2YUWY1