

KONICA MINOLTA

PARTS GUIDE MANUAL

MARCH 2018

FS-536
A87G

INFORMATION FOR PARTS GUIDE MANUAL

To find correct Parts No., refer to the "HOW TO MAKE THE BEST USE OF THIS MANUAL" in the following page.

HOW TO MAKE THE BEST USE OF THIS MANUAL

- 1 When you order, please check the proper figures beforehand that are on Our Parts Guide Manual, and order with the appropriate figures.
- 2 For screws, Nuts, Washers, retaining rings and Pins which are used in this model, one letter is shown on the Standard parts column of Parts list and exploded diagrams.
- 3 In order to maintain safety of the product, some specific parts composed of this product are set up as "essential safety parts".
- 4 The assigned parts number for the "essential safety parts" is indicated as "SP00-****".
When replacing these parts, follow precautions for disassembling and installing which are listed in the Service Manual.
Do not use any parts that are not set up as
- 5 ♣ means that there are exclusive parts for each destination.
Please check the appropriate destination when you order.
- 6 Revision Mark
Marked as ▲ on the illustration shows that the revision has been made.
- 7 All rights reserved. (any reprints or quotations are prohibited.)
Use of this parts guide manual should be strictly supervised to avoid disclosure of confidential information.

パーツガイドマニュアルのご案内

サービス部品をご発注の際には、下記に示す“パーツガイドマニュアルの活用にあたって”をご参照の上、正しい部品番号にてお願い致します。

パーツガイドマニュアルの活用にあたって

- 1 部品発注の際には、掲載されている部品番号の桁数を確認し、掲載されている桁数で発注願います。
- 2 この製品に使用されているネジ、ナット、ワッシャー、止め輪、ピンなどは、リストの右側の Standard parts 欄に a,b,c,…… で表示し、イラストにも a,b,c,…… 表示してあります。
- 3 製品の安全性を維持する為に、製品に使用される特定の部品を「重要保安部品」として設定しています。
- 4 重要保安部品の部品番号は、“SP00-****”と記載されていますので、部品交換時は、サービスマニュアル記載の分解・組み立ての注意事項に従って作業をして下さい。
また、指定以外の部品は一切使用しないで下さい。
- 5 本文に ♣ が表示されている部品は、仕向け地毎に専用部品がある事を意味しています。
オーダーされる時は、仕向け地を確認して下さい。
- 6 改訂記号について
イラスト上に ▲ 印が表示されている部分は、改訂された事を表します。
- 7 著作権所有（無断転載及び無断引用の禁止）
本パーツガイドマニュアルについては、機密保持等その扱いには十分注意して下さい。万一取り扱いを誤った場合には、法律で処罰されることがあります。

CONTENTS

No.	DESCRIPTION	名称	PAGE No.
1	EXTERNAL PARTS	外装部	P1
2	FRAME SECTION	フレーム部	P2
3	PAPER TRANSPORT SECTION	搬送部	P3 P4 P5 P6
4	PAPER EXIT TRAY SECTION	排紙トレイ部	P7 P8
5	STAPLER SECTION	ステープル部	P9
6	ALIGNMENT SECTION	整合部	P10 P11 P12 P13 P14
7	WIRING	束線	P15 P16
8	WIRING ACCESSORIES AND JIGS	配線部品・治具	P17

INDEX

Parts No.	Page No.
4030104002	2-7
4030104002	5-18
9J06M60100	2-17
9J08P00100	9-29
A00V240600	5-1
A00V240600	13-4
A02E193400	1-19
A092145400	3-34
A0EDM50100	3-32
A0EDM50100	5-12
A0EDM50100	6-7
A0EDM50100	12-19
A0HR115401	1-5
A0HR115401	2-19
A0HR116000	2-20
A0HR213100	4-19
A0TK341200	8-1
A108M50100	2-14
A108M50100	3-30
A108M50100	4-22
A108M50100	7-17
A108M50100	8-25
A108M50100	9-17
A108M50100	10-8
A108M50100	12-17
A108M50100	13-13
A108M50100	14-10
A3EP116100	2-21
A3EP560100	9-2
A3EPPP1001	4-21
A3EPPP1101	4-16
A3EPPP1101	13-17
A3EPPP1201	8-18
A3EPPP1300	7-14
A3EPPP1300	11-17
A3EPPP1300	12-3
A3EPPP1400	3-3
A3EPPP1501	5-2
A3EPPP1501	6-15
A3EPPP1501	8-16

Parts No.	Page No.
A3EPPP1A01	3-10
A3EPPP1E03	6-16
A3EPPP1F03	2-6
A3EPPP1J05	2-11
A3EPPP1K03	1-7
A3EPPP1L02	1-13
A3EPPP1L03	1-13
A3EPPP1M04	1-12
A3EPPP1M05	1-12
A3EPPP1N00	1-11
A3EPPP1S03	1-3
A3EPPP1T04	2-10
A3EPPP1U02	2-22
A3EPPP1V02	2-18
A3EPPP1X02	2-16
A3EPPP1Y01	1-16
A3EPPP1Y01	8-12
A3EPPP2201	2-15
A3EPPP2301	1-10
A3EPPP2600	2-8
A3EPPP2600	7-19
A3EPPP2700	2-1
A3EPPP2700	7-21
A3EPPP2803	6-13
A3EPPP2901	6-11
A3EPPP2A02	6-17
A3EPPP2B02	5-6
A3EPPP2D02	4-2
A3EPPP2E02	6-28
A3EPPP2F02	5-16
A3EPPP2H01	4-23
A3EPPP2J01	3-5
A3EPPP2K02	5-21
A3EPPP2K03	5-21
A3EPPP2L03	6-31
A3EPPP2M01	3-31
A3EPPP2N02	2-3
A3EPPP2P01	3-14
A3EPPP2Q02	3-11
A3EPPP2R01	4-7

Parts No.	Page No.
A3EPPP2R01	6-32
A3EPPP2T02	5-11
A3EPPP2U01	5-14
A3EPPP2V01	4-15
A3EPPP2X01	5-3
A3EPPP2Y02	6-21
A3EPPP3001	5-24
A3EPPP3104	6-22
A3EPPP3201	3-26
A3EPPP3306	6-23
A3EPPP3402	4-25
A3EPPP3500	5-23
A3EPPP3501	5-23
A3EPPP3603	6-24
A3EPPP3702	5-9
A3EPPP3702	6-1
A3EPPP3800	4-4
A3EPPP3901	3-6
A3EPPP3A02	4-27
A3EPPP3B02	4-24
A3EPPP3C00	4-14
A3EPPP3D02	4-17
A3EPPP3E01	6-5
A3EPPP3F01	3-2
A3EPPP3H01	6-8
A3EPPP3J00	3-1
A3EPPP3K03	3-8
A3EPPP3L02	3-13
A3EPPP3M00	3-4
A3EPPP3N00	3-24
A3EPPP3P01	3-22
A3EPPP3Q00	3-18
A3EPPP3R02	3-16
A3EPPP3S00	6-10
A3EPPP3T01	5-10
A3EPPP3U00	6-25
A3EPPP3V01	5-25
A3EPPP3X00	3-12
A3EPPP3Y01	6-26
A3EPPP4000	6-3

Parts No.	Page No.
A3EPPP4102	3-17
A3EPPP4202	6-9
A3EPPP4302	5-8
A3EPPP4302	6-2
A3EPPP4400	5-13
A3EPPP4501	6-19
A3EPPP4600	4-26
A3EPPP4701	3-9
A3EPPP4800	5-15
A3EPPP4902	3-7
A3EPPP4A02	6-27
A3EPPP4B00	5-26
A3EPPP4C01	2-4
A3EPPP4D04	6-14
A3EPPP4E04	5-17
A3EPPP4F04	5-7
A3EPPP4G15	5-20
A3EPPP4K00	4-13
A3EPPP4L00	4-11
A3EPPP4M00	4-8
A3EPPP4N00	4-12
A3EPPP4P00	4-5
A3EPPP4Q00	4-10
A3EPPP4S01	5-5
A3EPPP4T02	6-18
A3EPPP4U00	3-25
A3EPPP4U00	4-20
A3EPPP4X01	6-12
A3EPPP4Y01	1-2
A3EPPP4Y01	6-29
A3EPPP5101	6-30
A3EPPP5201	2-5
A3EPPP5302	4-1
A3EPPP5403	3-15
A3EPPP5500	3-29
A3EPPP5500	13-11
A3EPPP5500	14-12
A3EPPP5600	3-28
A3EPPP5701	6-20
A3EPPP5B01	13-16

Parts No.	Page No.
A3EPPP5C00	14-14
A3EPPP5F03	13-18
A3EPPP5G04	13-3
A3EPPP5G05	13-3
A3EPPP5H00	13-14
A3EPPP5J02	13-20
A3EPPP5K00	14-19
A3EPPP5L00	14-22
A3EPPP5M01	14-20
A3EPPP5N01	14-9
A3EPPP5Q00	14-16
A3EPPP5R01	14-13
A3EPPP5T02	14-18
A3EPPP5U01	14-5
A3EPPP5X01	14-7
A3EPPP5Y01	14-11
A3EPPP6000	13-5
A3EPPP6201	14-4
A3EPPP6501	14-2
A3EPPP6601	14-24
A3EPPP6701	14-17
A3EPPP6801	13-23
A3EPPP6802	13-23
A3EPPP6A01	13-10
A3EPPP6B01	13-6
A3EPPP6C02	13-15
A3EPPP6F01	3-23
A3EPPP6G00	3-20
A3EPPP6H01	3-21
A3EPPP6J00	14-15
A3EPPP6K01	13-8
A3EPPP6L01	3-19
A3EPPP6M02	13-7
A3EPPP6N01	13-24
A3EPPP6P01	13-25
A3EPPP6Q00	12-9
A3EPPP6R01	12-8
A3EPPP6S01	10-2
A3EPPP6T03	10-1
A3EPPP6U01	12-5

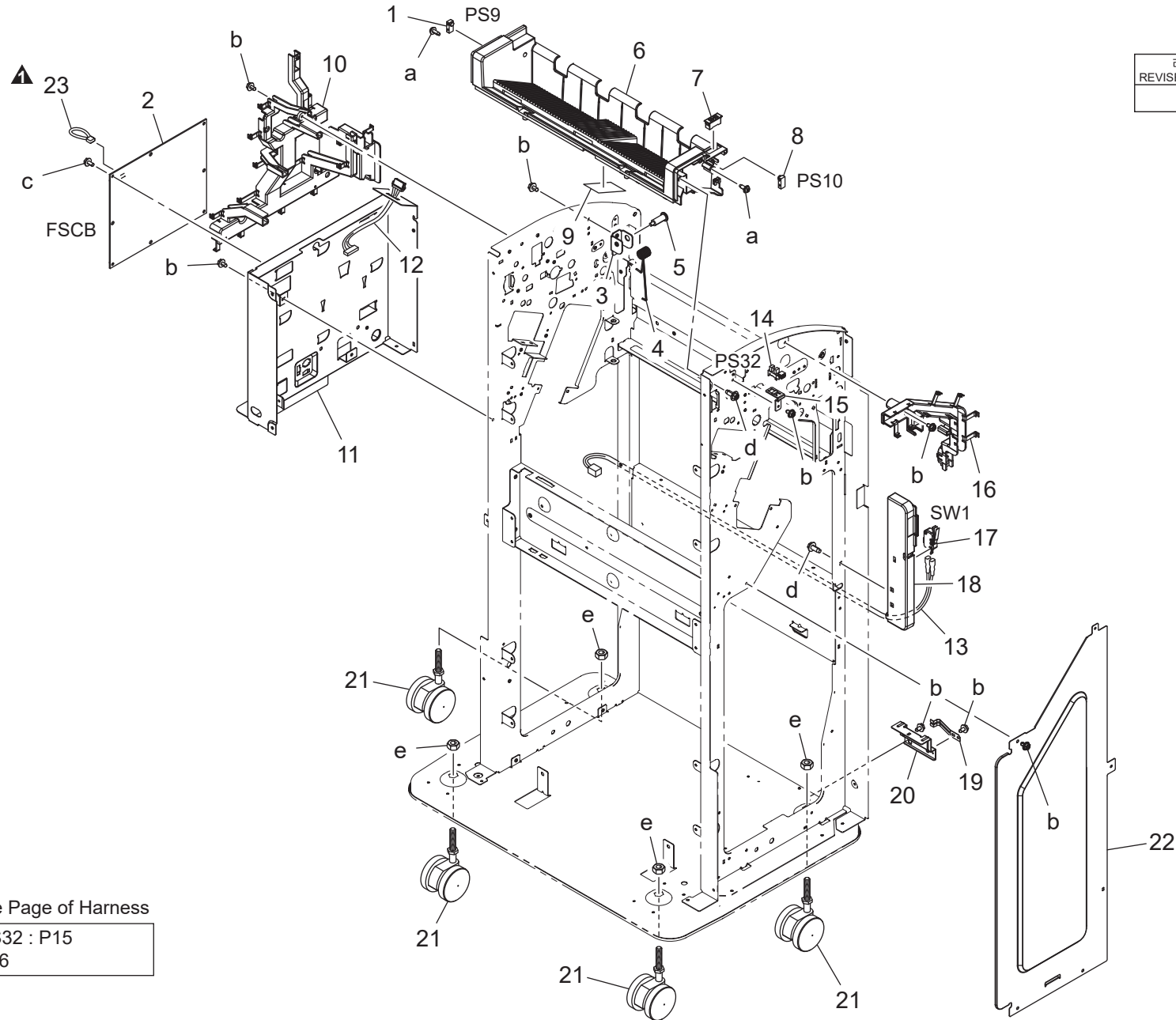
Parts No.	Page No.	Parts No.	Page No.	Parts No.	Page No.	Parts No.	Page No.	Parts No.	Page No.
A3EPPP6V01	12-7	A3EPPP8601	12-14	A3EPPP9S02	7-5	A3EPPPBS00	7-28	A3EPPPF501	6-6
A3EPPP6X00	12-6	A3EPPP8701	12-13	A3EPPP9T01	7-13	A3EPPPBT01	2-13	A3EPPPF600	1-6
A3EPPP6Y01	12-25	A3EPPP8802	12-16	A3EPPP9U02	7-25	A3EPPPBU02	15-2	A3EPPPF900	6-4
A3EPPP7002	12-23	A3EPPP8900	12-15	A3EPPP9X01	7-10	A3EPPPBU04	15-2	A3EPPPF00	6-38
A3EPPP7100	12-22	A3EPPP8A00	12-4	A3EPPP9Y02	7-8	A3EPPPBV00	2-12	A3EPPPFH00	2-23
A3EPPP7203	12-20	A3EPPP8B00	12-21	A3EPPPA001	8-5	A3EPPPC001	14-27	A87GPP0000	13-2
A3EPPP7303	12-1	A3EPPP8C01	12-18	A3EPPPA101	7-11	A3EPPPC101	7-18	A87GPP0100	1-14
A3EPPP7503	10-13	A3EPPP8D02	12-11	A3EPPPA202	7-15	A3EPPPC300	6-34	A87GPP0201	13-9
A3EPPP7600	10-14	A3EPPP8L00	9-5	A3EPPPA302	7-9	A3EPPPC401	5-4	A87GPP0301	5-19
A3EPPP7702	11-23	A3EPPP8M03	9-20	A3EPPPA401	7-4	A3EPPPC500	3-33	A87GPP0400	13-19
A3EPPP7804	11-16	A3EPPP8N01	9-6	A3EPPPA603	7-16	A3EPPPC601	4-30	A87GPP0500	13-1
A3EPPP7900	11-15	A3EPPP8P03	9-7	A3EPPPA802	7-29	A3EPPPC700	14-26	A87GPP0601	14-6
A3EPPP7A01	11-7	A3EPPP8Q02	9-11	A3EPPPAA00	7-1	A3EPPPC801	12-26	A87GPP0701	14-3
A3EPPP7B04	11-11	A3EPPP8R01	9-10	A3EPPPAB02	7-7	A3EPPPC901	16-2	A87GPP0800	14-29
A3EPPP7C04	11-12	A3EPPP8S00	9-12	A3EPPPAC01	7-6	A3EPPPCA01	9-27	A87GPP0900	14-28
A3EPPP7D00	11-13	A3EPPP8T00	9-14	A3EPPPAD00	7-3	A3EPPPCB00	9-26	A87GPP0A00	14-30
A3EPPP7E00	11-10	A3EPPP8U00	9-19	A3EPPPAF02	7-24	A3EPPPCCH01	7-27	A87GPP0B01	9-18
A3EPPP7F01	11-9	A3EPPP8V01	9-13	A3EPPPAG02	7-23	A3EPPPCM01	16-3	A87GPP0C00	9-8
A3EPPP7G00	11-8	A3EPPP8X02	9-16	A3EPPPAH00	7-20	A3EPPPCP00	1-9	A87GPP0D00	9-3
A3EPPP7H00	11-6	A3EPPP8Y03	9-1	A3EPPPAJ00	11-3	A3EPPPCQ00	3-27	A87GPP0E00	9-21
A3EPPP7J02	11-19	A3EPPP9001	9-4	A3EPPPAK00	11-20	A3EPPPCS00	13-12	A87GPP0F01	9-31
A3EPPP7K01	11-2	A3EPPP9104	9-23	A3EPPPAM00	12-10	A3EPPPCST00	14-21	A87GPP0G00	9-33
A3EPPP7L03	11-25	A3EPPP9200	9-15	A3EPPPAN00	11-4	A3EPPPCU00	14-23	A87GPP0H00	9-30
A3EPPP7M04	11-18	A3EPPP9301	9-9	A3EPPPAP00	11-21	A3EPPPCV01	10-12	A87GPP0J01	9-32
A3EPPP7N04	11-1	A3EPPP9507	7-22	A3EPPPAP00	11-21	A3EPPPCX01	9-22	A87GPP0K01	9-24
A3EPPP7P01	10-6	A3EPPP9602	8-8	A3EPPPAP00	11-21	A3EPPPCY00	7-2	A87GPP0M00	9-34
A3EPPP7R02	10-17	A3EPPP9901	8-9	A3EPPPAP00	11-21	A3EPPPD000	8-10	A87GPP0N00	8-22
A3EPPP7R04	10-17	A3EPPP9A02	8-11	A3EPPPAP01	12-24	A3EPPPD100	8-6	A87GPP0P00	8-14
A3EPPP7S00	10-10	A3EPPP9B00	8-3	A3EPPPAR01	8-27	A3EPPPD200	8-29	A87GPP0Q00	8-15
A3EPPP7T05	10-20	A3EPPP9C01	8-4	A3EPPPAS01	8-2	A3EPPPD500	6-35	A87GPP0R01	8-23
A3EPPP7U01	11-22	A3EPPP9D01	8-30	A3EPPPAT00	11-14	A3EPPPD600	10-21	A87GPP0S00	16-1
A3EPPP7V01	11-5	A3EPPP9E00	8-17	A3EPPPBB11	4-6	A3EPPPD800	12-27	A87GPP0T00	9-25
A3EPPP7X01	10-7	A3EPPP9G00	8-19	A3EPPPB001	2-9	A3EPPPD900	6-36	A87GPP0U01	9-28
A3EPPP7Y01	10-9	A3EPPP9H04	8-20	A3EPPPB001	2-9	A3EPPPDF00	17-7	A87GPP0V00	2-2
A3EPPP8000	10-18	A3EPPP9J02	8-21	A3EPPPB001	2-9	A3EPPPDF01	4-3	A87GPP0W01	13-26
A3EPPP8102	10-19	A3EPPP9K00	8-28	A3EPPPB001	2-9	A3EPPPDG00	4-9	A87GPP0X01	13-27
A3EPPP8202	10-5	A3EPPP9N02	8-7	A3EPPPB001	2-9	A3EPPPF100	1-4	A87GPP0Y00	8-26
A3EPPP8301	12-2	A3EPPP9P01	8-13	A3EPPPB001	2-9	A3EPPPF200	1-17	A87GPP1000	14-8
A3EPPP8400	10-4	A3EPPP9Q01	7-12	A3EPPPB001	2-9	A3EPPPF300	1-18	A87GPP1100	14-1
A3EPPP8501	10-3	A3EPPP9R01	7-26	A3EPPPB001	2-9	A3EPPPF400	1-1	A87GPP1301	1-15

Parts No.	Page No.
A87GPP1400	10-16
A87GPP1500	10-11
A87GPP1600	11-26
A87GPP1701	10-22
A87HPP7400	10-15
A87HPP7500	12-12
A87HPP9K00	7-30
V500010081	17-8
V500010082	17-1
V500010083	17-2
V500020098	17-3
V500020099	17-4
V570010021	17-5
V570010026	17-6

FRAME SECTION

P 2

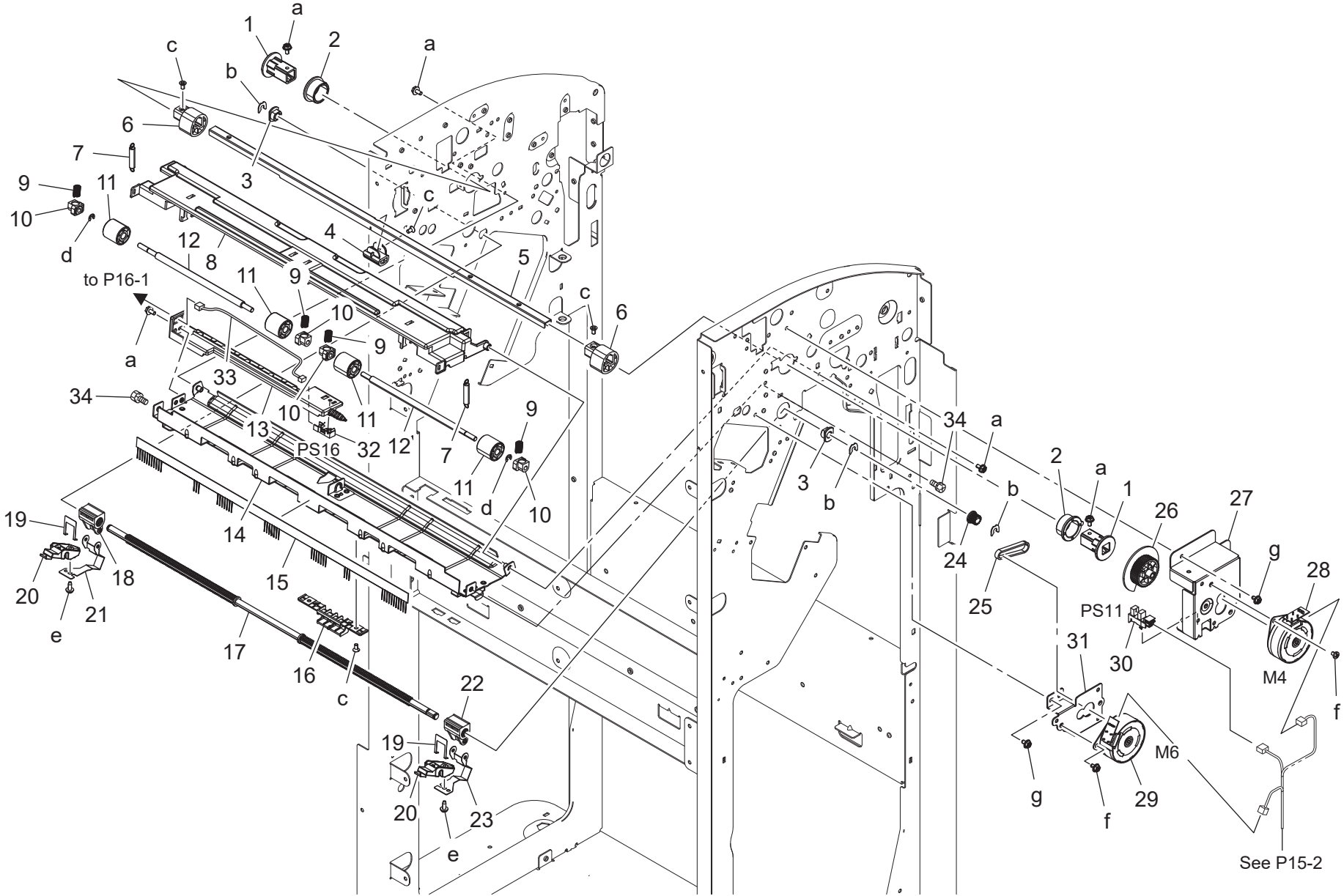
改訂版 REVISED EDITION	日付 DATE
	NOVEMBER 2017



Reference Page of Harness

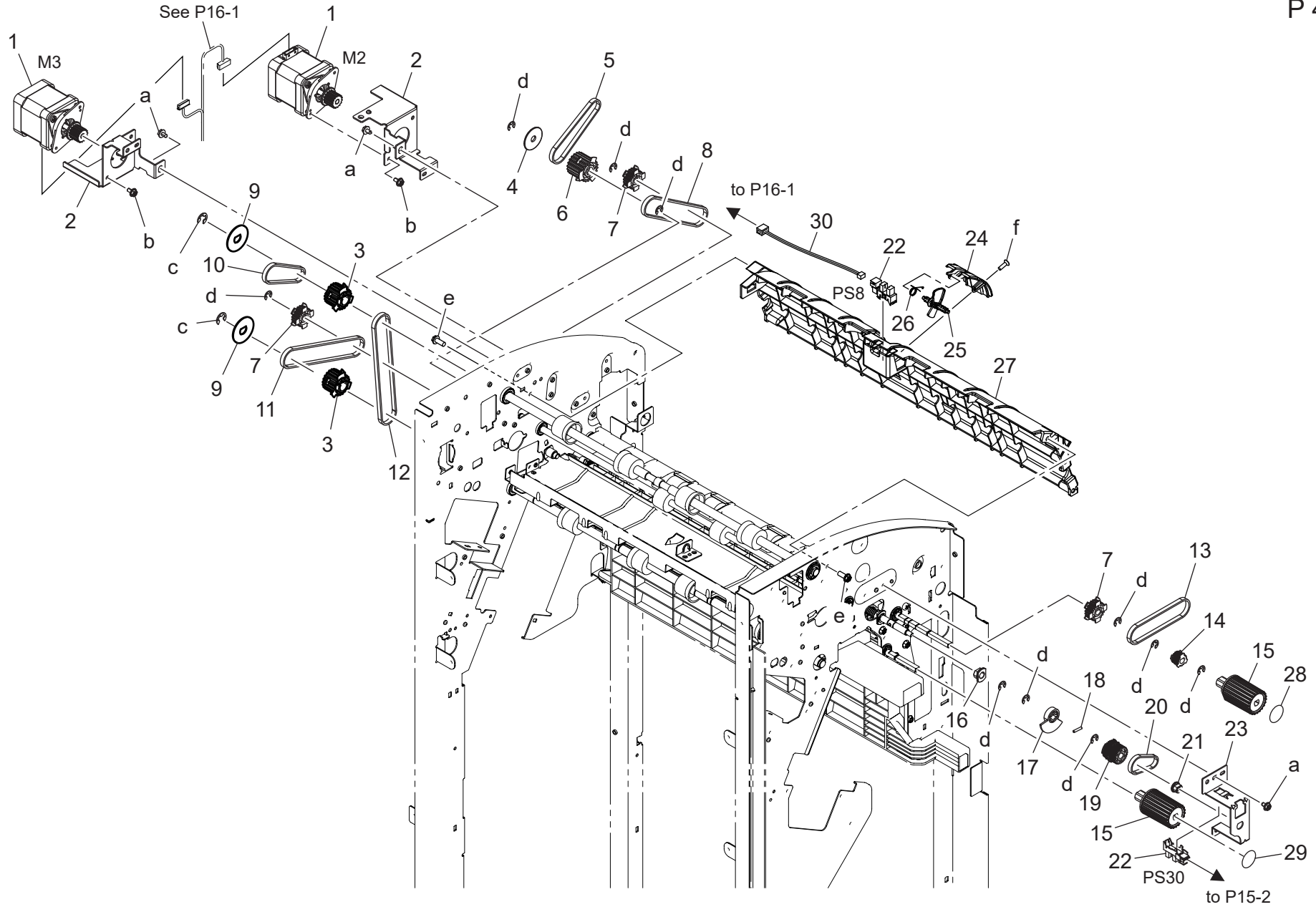
PS10,PS32 : P15
PS9 : P16

PAPER TRANSPORT SECTION



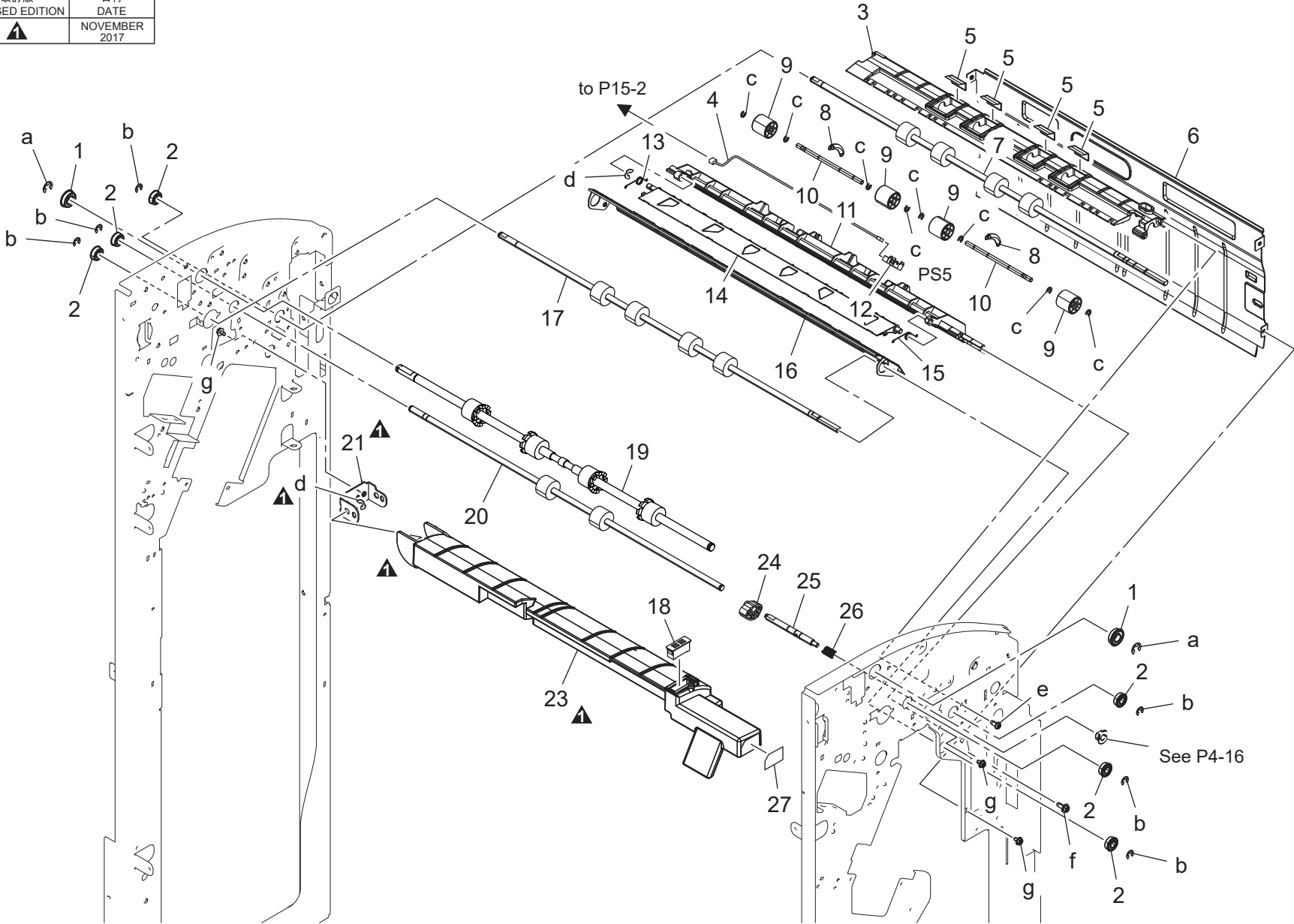
Key	Part No.	Description	Destinations	Class	QTY	Standard parts
1	A3EPPP3J00	Bush		C	2	a-V118030603 b-V218040086 c-V112030603 d-V217030001 e-V149030603 f-V118030403 g-V144030603
2	A3EPPP3F01	Bush		C	2	
3	A3EPPP1400	Bushing		D	2	
4	A3EPPP3M00	Cam		C	1	
5	A3EPPP2J01	Bracket		D	1	
6	A3EPPP3901	Cam		C	2	
7	A3EPPP4902	Tension Spring		C	2	
8	A3EPPP3K03	Guide		D	1	
9	A3EPPP4701	Pressure Spring		C	4	
10	A3EPPP1A01	Bush		C	4	
11	A3EPPP2Q02	Roller		C	4	
12	A3EPPP3X00	Shaft		D	2	
13	A3EPPP3L02	Guide		D	1	
14	A3EPPP2P01	Guide Assy		D	1	
15	A3EPPP5403	Neutralizing Brush		C	1	
16	A3EPPP3R02	Holder		D	1	
17	A3EPPP4102	Shaft		D	1	
18	A3EPPP3Q00	Nut		C	1	
19	A3EPPP6L01	Film		C	2	
20	A3EPPP6G00	Drum		C	2	
21	A3EPPP6H01	Stopper		C	1	
22	A3EPPP3P01	Nut		C	1	
23	A3EPPP6F01	Stopper		C	1	
24	A3EPPP3N00	Pulley		D	1	
25	A3EPPP4U00	Timing Belt		C	1	
26	A3EPPP3201	Cam		C	1	
27	A3EPPPCQ00	Bracket		D	1	
28	A3EPPP5600	Motor Assy		C	1	
29	A3EPPP5500	Motor Assy		C	1	
30	A108M50100	Photointerrupter		B	1	
31	A3EPPP2M01	Bracket		D	1	
32	A0EDM50100	Photorelector		I	1	
33	A3EPPPC500	Wire Harness Assy		D	1	
34	A092145400	Shoulder screw		C	2	

PAPER TRANSPORT SECTION



PAPER TRANSPORT SECTION


改訂版 REVISED EDITION	日付 DATE
▲	NOVEMBER 2017

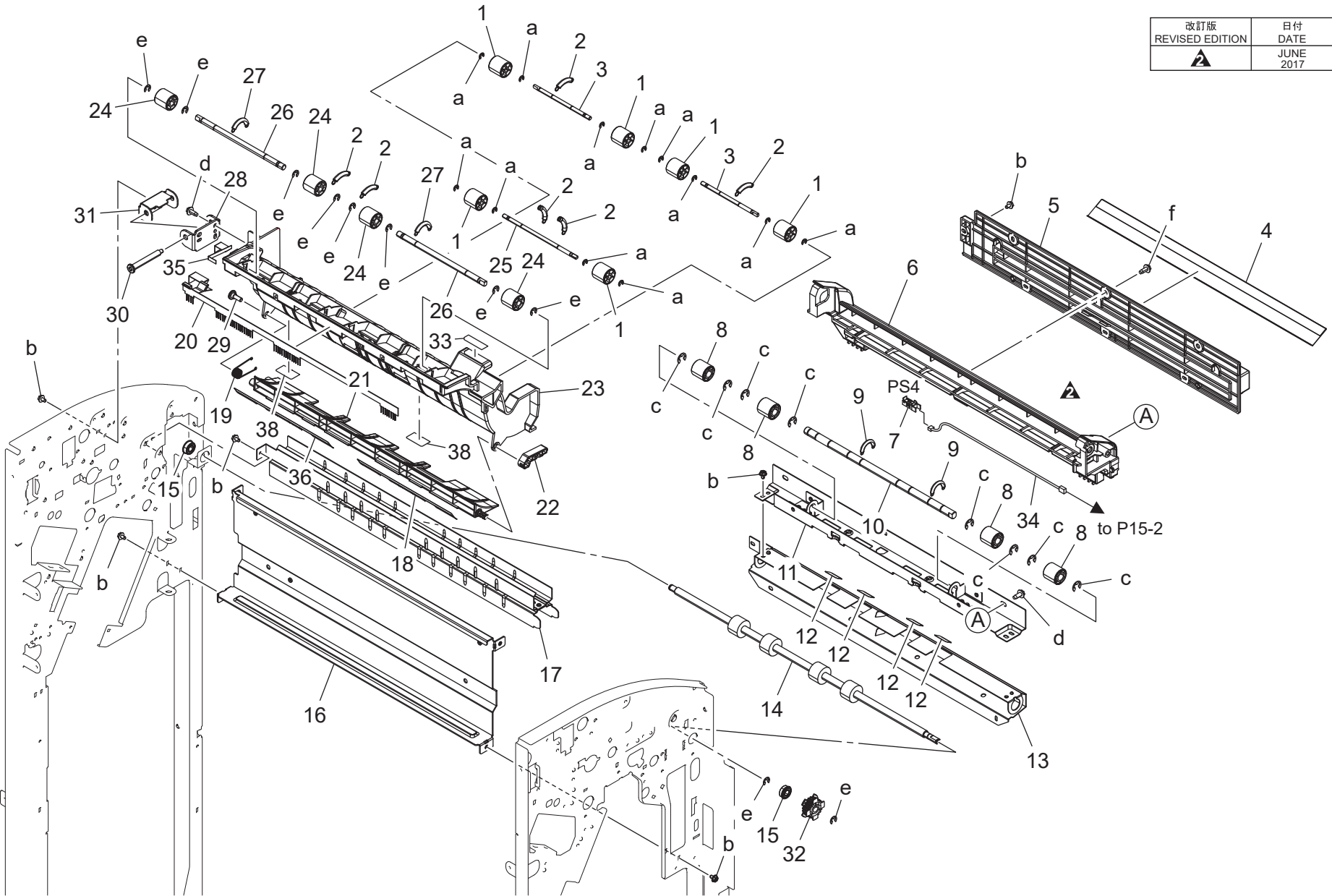


PAPER TRANSPORT SECTION

Key	Part No.	Description	Destinations	Class	QTY	Standard parts
1	A00V240600	Ball Bearing		B	2	a-V217060001 b-V217040001 c-V217030001 d-V218040086 e-V145040803 f-V153041003 g-V144030603
2	A3EPPP1501	Ball Bearing		C	6	
3	A3EPPP2X01	Guide		D	1	
4	A3EPPPC401	Wire Harness Assy		D	1	
5	A3EPPP4S01	Film		C	4	
6	A3EPPP2B02	Guide		D	1	
7	A3EPPP4F04	Roller		C	1	
8	A3EPPP4302	Tension Spring		C	2	
9	A3EPPP3702	Roll		C	4	
10	A3EPPP3T01	Shaft		D	2	
11	A3EPPP2T02	Guide		D	1	
12	A0EDM50100	Photorelector		I	1	
13	A3EPPP4400	Torsion Coil spring		C	1	
14	A3EPPP2U01	Guide Plate		C	1	
15	A3EPPP4800	Torsion Coil spring		C	1	
16	A3EPPP2F02	Guide		D	1	
17	A3EPPP4E04	Roller		C	1	
18	4030104002	CATCH		D	1	
19	A87GPP0301	Roller		C	1	
20	A3EPPP4G15	Roller		C	1	
21	A3EPPP2K02Old	Hinge		D	1	
21	A3EPPP2K03	Hinge		D	1	
23	A3EPPP3500Old	Guide		D	1	
23	A3EPPP3501	Guide		D	1	
24	A3EPPP3001	Cam		C	1	
25	A3EPPP3V01	Shaft		D	1	
26	A3EPPP4B00	Pressure Spring		C	1	
27	A3EPPPBH02	Label		D	1	

PAPER TRANSPORT SECTION

改訂版 REVISED EDITION	日付 DATE
	JUNE 2017



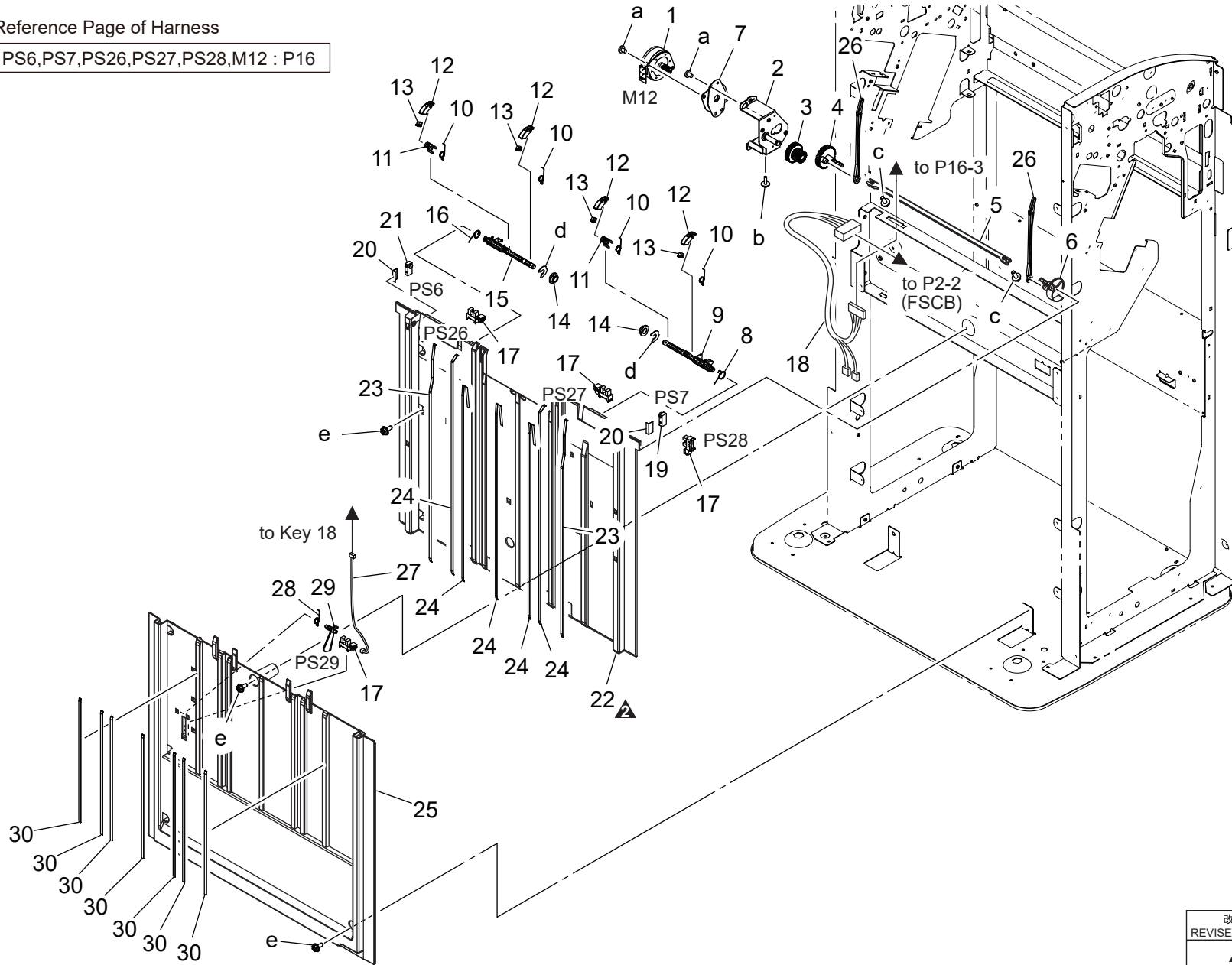
Key	Part No.	Description	Destinations	Class	QTY	Standard parts
1	A3EPPP3702	Roll		C	6	a-V217030001 b-V144030603 c-V217060001 d-V153041003 e-V217040001 f-V153041004
2	A3EPPP4302	Tension Spring		C	6	
3	A3EPPP4000	Shaft		D	2	
4	A3EPPPF900	Film		C	1	
5	A3EPPP3E01	Guide		D	1	
6	A3EPPPF501	Guide		D	1	
7	A0EDM50100	Photorelector		I	1	
8	A3EPPP3H01	Roller		C	4	
9	A3EPPP4202	Tension Spring		C	2	
10	A3EPPP3S00	Shaft		D	1	
11	A3EPPP2901	Guide Assy		D	1	
12	A3EPPP4X01	Film		C	4	
13	A3EPPP2803	Guide		D	1	
14	A3EPPP4D04	Roller		C	1	
15	A3EPPP1501	Ball Bearing		C	2	
16	A3EPPP1E03	Reinforce Stay		D	1	
17	A3EPPP2A02	Guide Assy		D	1	
18	A3EPPP4T02	Film		C	1	
19	A3EPPP4501	Torsion Coil spring		C	1	
20	A3EPPP5701	Neutralizing Brush		C	1	
21	A3EPPP2Y02	Guide Plate		C	1	
22	A3EPPP3104	Lever		C	1	
23	A3EPPP3306	Guide		D	1	
24	A3EPPP3603	Roller		C	4	
25	A3EPPP3U00	Shaft		D	1	
26	A3EPPP3Y01	Shaft		D	2	
27	A3EPPP4A02	Tension Spring		C	2	
28	A3EPPP2E02	Bracket		D	1	
29	A3EPPP4Y01	Screw		D	1	
30	A3EPPP5101	Screw		D	1	
31	A3EPPP2L03	Bracket		D	1	
32	A3EPPP2R01	Pulley		C	1	
33	A3EPPPB01	Label		D	1	
34	A3EPPPC300	Wire Harness Assy		D	1	
35	A3EPPPD500	Seal		C	1	
36	A3EPPPD900	Film		D	1	
38	A3EPPPF00	Guide Film		C	2	

PAPER EXIT TRAY SECTION

Reference Page of Harness

PS6,PS7,PS26,PS27,PS28,M12 : P16

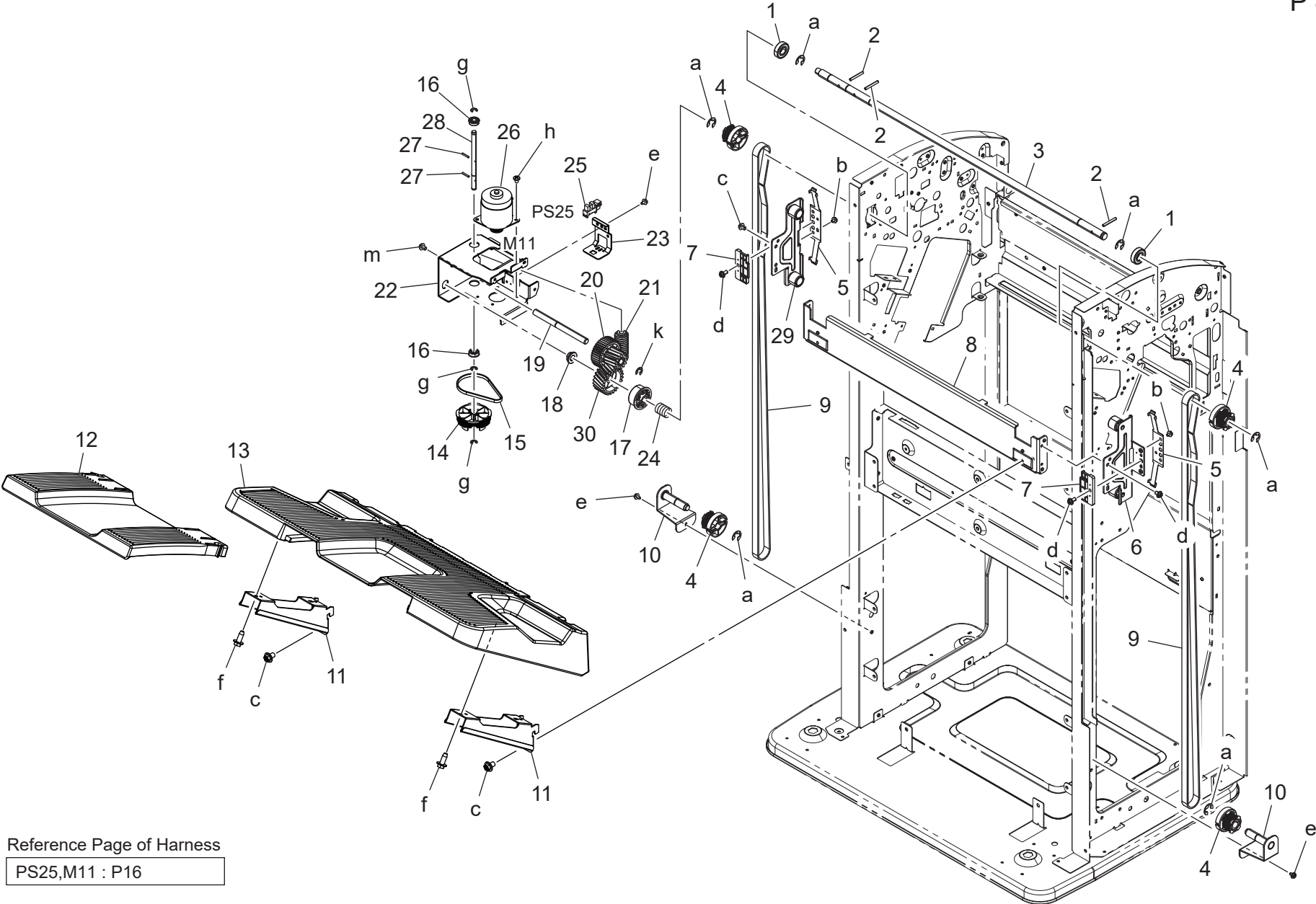
P 7



改訂版 REVISED EDITION	日付 DATE
	NOVEMBER 2017

FS-536

PAPER EXIT TRAY SECTION



Reference Page of Harness
PS25,M11 : P16

PAPER EXIT TRAY SECTION

Key	Part No.	Description	Destinations	Class	QTY	Standard parts
1	A0TK341200	Ball Bearing /Front		C	2	a-V217080001
2	A3EPPPA01	Pin		D	3	b-V118030403
3	A3EPPP9B00	Shaft		D	1	c-V118040803
4	A3EPPP9C01	Gear		C	4	d-V118040603
5	A3EPPPA001	Plate Spring		D	2	e-V144030603
6	A3EPPPD100	Support Plate Assy		D	1	f-V153041003
7	A3EPPP9N02	Holder		D	2	g-V217040001
8	A3EPPP9602	Mounting Plate		D	1	h-V118030603
9	A3EPPP9901	Timing Belt		C	2	k-V217060001
10	A3EPPPD000	Support Plate		D	2	m-V116040803
11	A3EPPP9A02	Frame		D	2	
12	A3EPPP1Y01	Tray		C	1	
13	A3EPPP9P01	Tray		C	1	
14	A87GPP0P00	Gear 70T		C	1	
15	A87GPP0Q00	Timing Belt 186L		C	1	
16	A3EPPP1501	Ball Bearing		C	2	
17	A3EPPP9E00	Ratchet		C	1	
18	A3EPPP1201	Bushing		D	1	
19	A3EPPP9G00	Shaft		D	1	
20	A3EPPP9H04	Gear		C	1	
21	A3EPPP9J02	Worm Gear		C	1	
22	A87GPP0N00	Mounting Plate		D	1	
23	A87GPP0R01	Mounting Plate		D	1	
24	A3EPPPBR01	Pressure Spring		C	1	
25	A108M50100	Photointerrupter		B	1	
26	A87GPP0Y00	Motor Assy		C	1	
27	A3EPPPAR01	Pin		D	2	
28	A3EPPP9K00	Shaft		D	1	
29	A3EPPPD200	Support Plate Assy		D	1	
30	A3EPPP9D01	Gear		C	1	

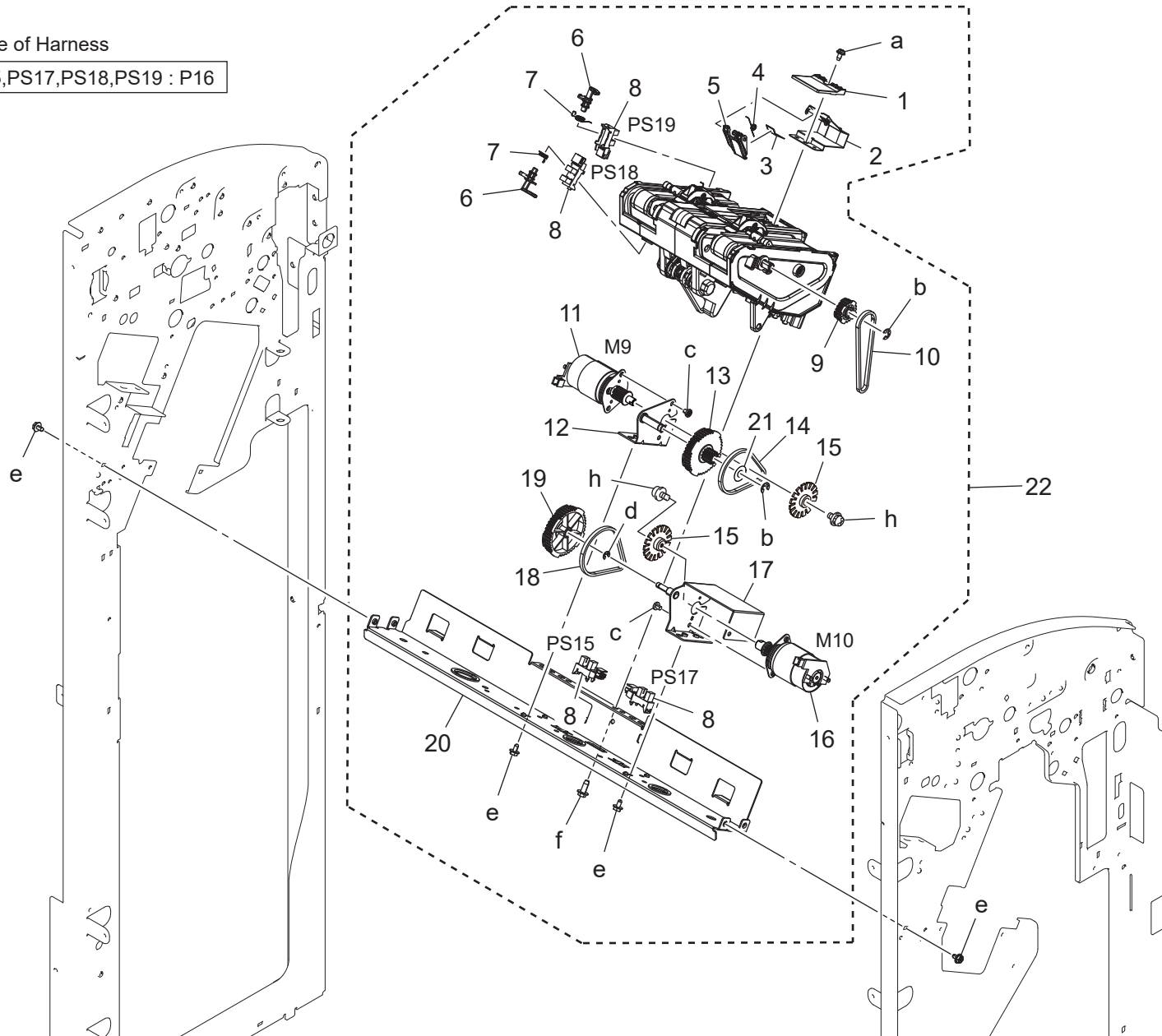
STAPLER SECTION

Key	Part No.	Description	Destinations	Class	QTY	Standard parts
1	A3EPPP8Y03	Holder	ホルダ	D	1	a-V144030803 b-V217025001 c-V116030603 d-V112030603 e-V144030603 f-V118030603 g-V217040001 h-V118030403
2	A3EP560100	Stapler Unit	ステーブラーユニット	C	1	
3	A87GPP0D00	Mounting Plate	取付板	D	1	
4	A3EPPP9001	Roll	ころ	C	2	
5	A3EPPP8L00	Collar	カラー	C	1	
6	A3EPPP8N01	Roll	ころ	C	2	
7	A3EPPP8P03	Holder	ホルダ	D	1	
8	A87GPP0C00	Mounting Plate	取付板	D	1	
9	A3EPPP9301	Guide	ガイド	D	1	
10	A3EPPP8R01	Plate Spring	板ばね	D	1	
11	A3EPPP8Q02	Holder	ホルダ	D	1	
12	A3EPPP8S00	Timing Belt	タイミングベルト	C	1	
13	A3EPPP8V01	Gear	ギア	C	1	
14	A3EPPP8T00	Timing Belt	タイミングベルト	C	1	
15	A3EPPP9200	Shaft	軸	D	1	
16	A3EPPP8X02	Knob	つまみ	C	1	
17	A108M50100	Photointerrupter	透過型センサ	B	3	
18	A87GPP0B01	Holder	ホルダ	D	1	
19	A3EPPP8U00	Shaft	軸	D	1	
20	A3EPPP8M03	Shaft	軸	D	2	
21	A87GPP0E00	Rail	レール	D	1	
22	A3EPPPCX01	Mounting Plate	取付板	D	1	
23	A3EPPP9104	Motor	モーター	C	1	
24	A87GPP0K01	Torsion Coil Spring	ねじりコイルばね	C	1	
25	A87GPP0T00	Harness	束線	D	1	
26	A3EPPPCB00	Wire Harness Assy	ハーネス A S S Y	D	1	
27	A3EPPPCA01	Wire Harness Assy	ハーネス A S S Y	D	1	
28	A87GPP0U01	Harness	束線	D	1	
29	9J08P00100	STAPLE CARTRIDGE	ステープルカートリッジ (針なし)	C	1	
30	A87GPP0H00	Cam	カム	C	1	
31	A87GPP0F01	Mounting Plate	取付板	D	1	
32	A87GPP0J01	Holder	ホルダ	D	1	
33	A87GPP0G00	Actuator	アクチュエータ	C	1	
34	A87GPP0M00	Pulling Coil spring	引張りコイルばね	C	1	

ALIGNMENT SECTION

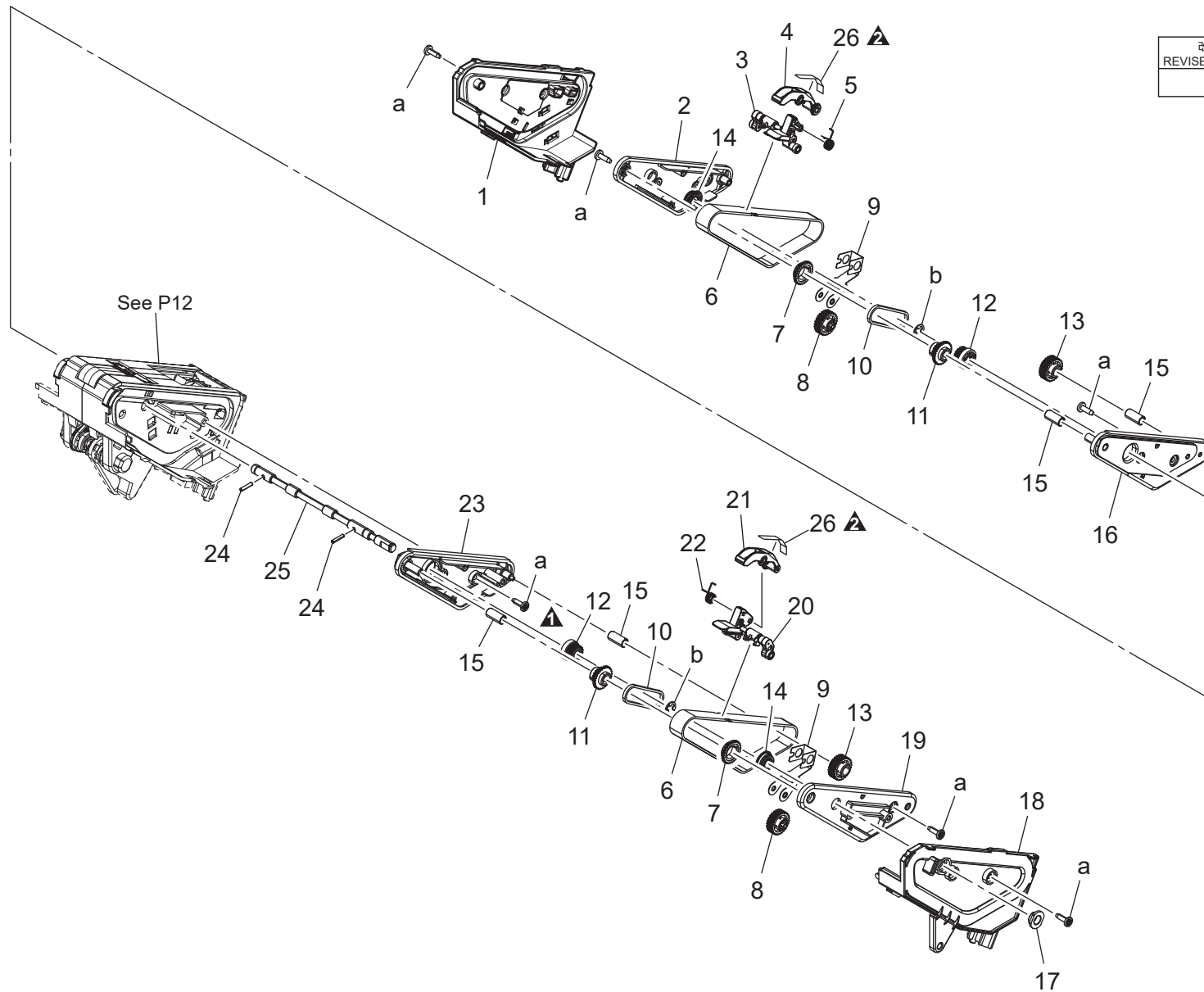
Reference Page of Harness

M9,M10,PS15,PS17,PS18,PS19 : P16

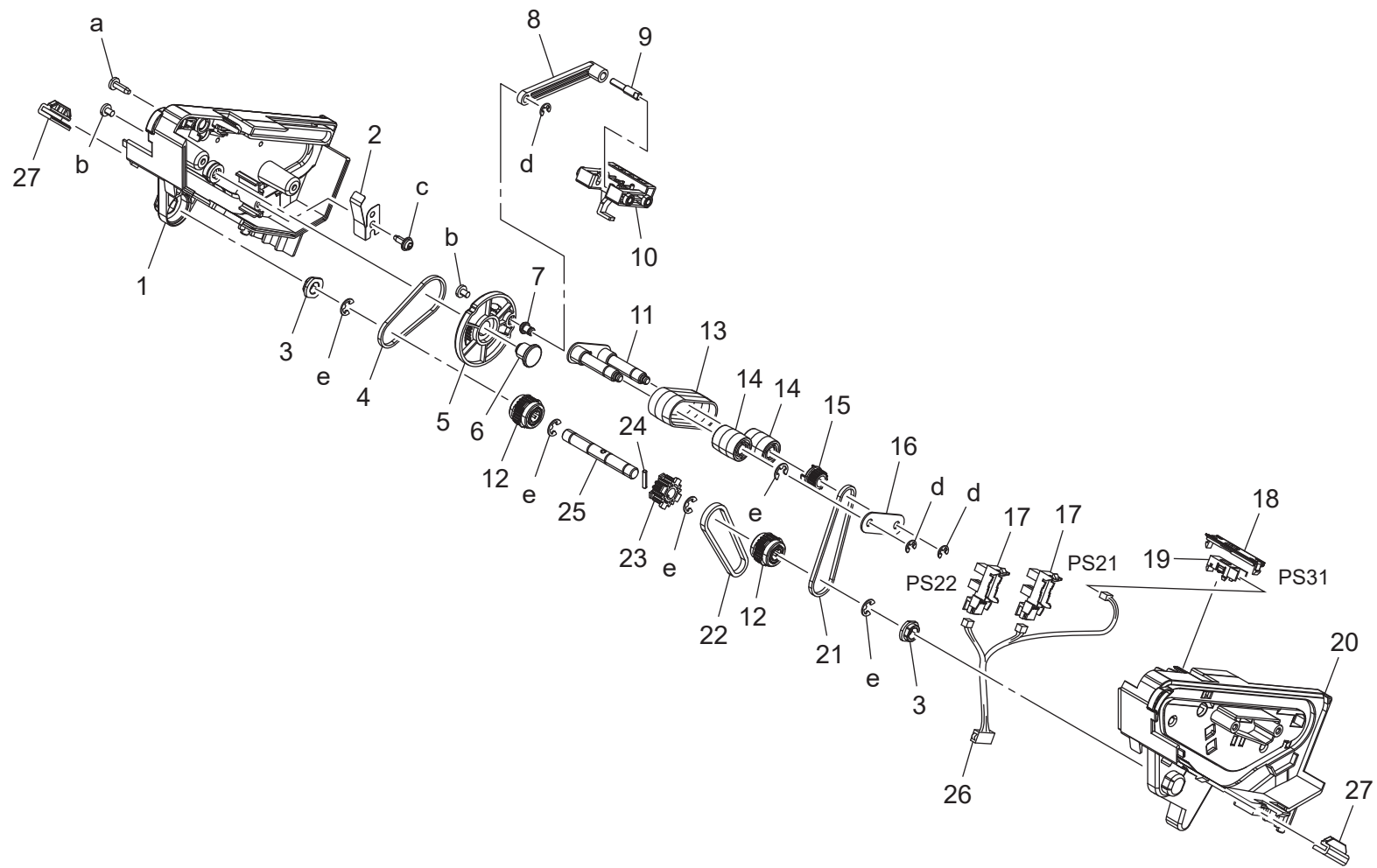


ALIGNMENT SECTION

改訂版 REVISED EDITION	日付 DATE
	SEPTEMBER 2016



ALIGNMENT SECTION



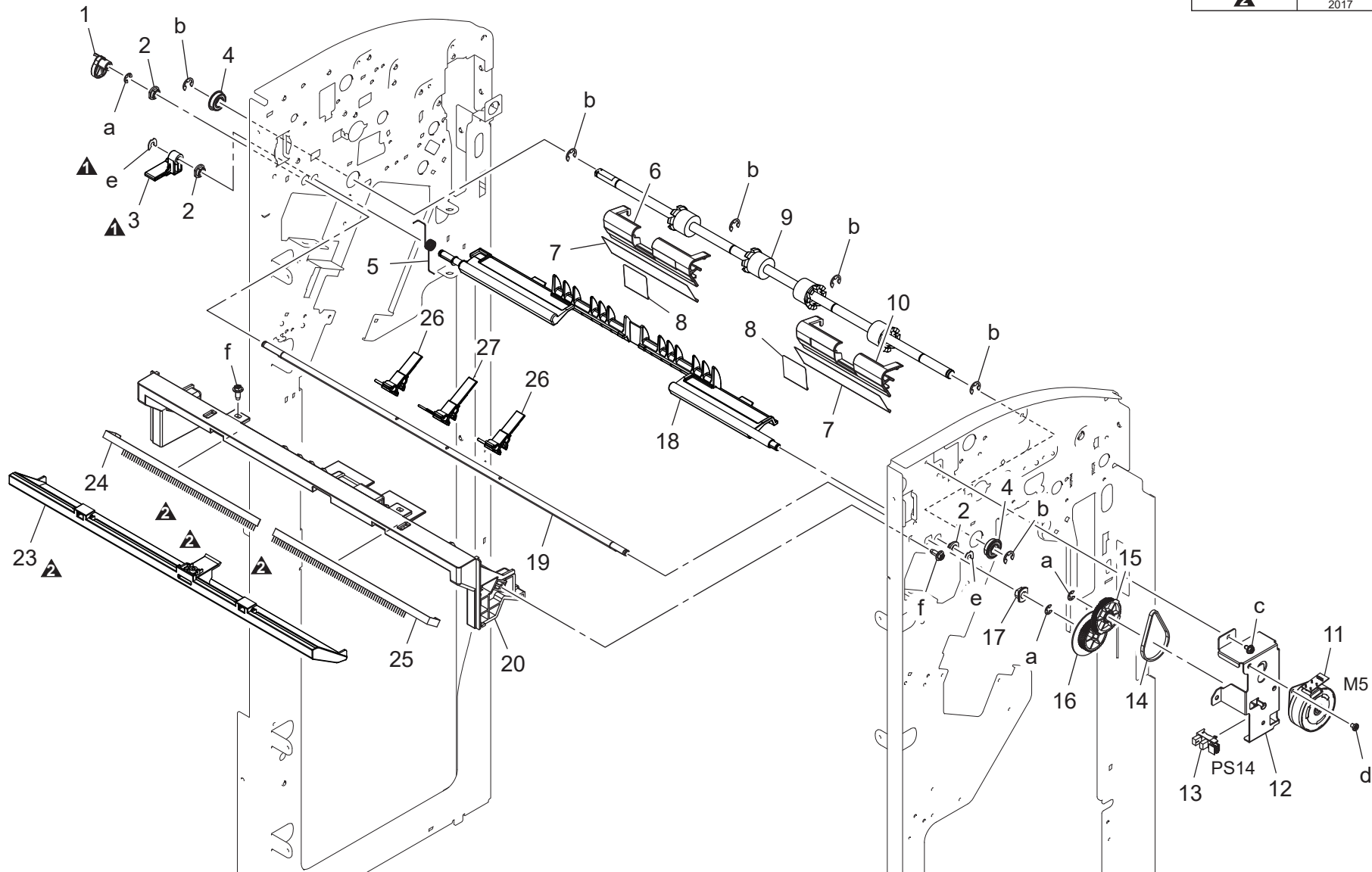
ALIGNMENT SECTION

Reference Page of Harness

PS14,M5,SW2 : P15

P 13

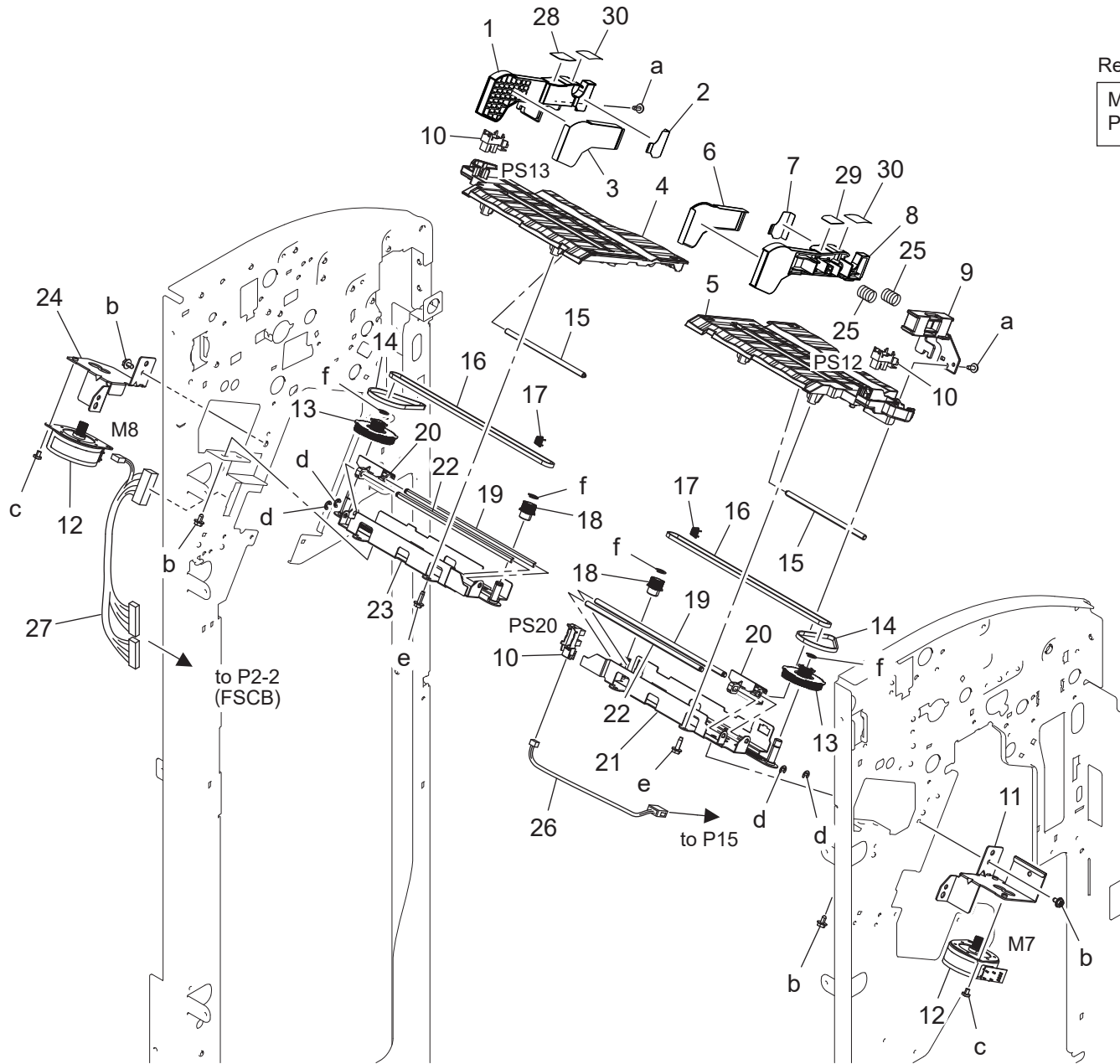
改訂版 REVISED EDITION	日付 DATE
	NOVEMBER 2017



ALIGNMENT SECTION

Reference Page of Harness

M7,PS12 : P15
PS13 : P16

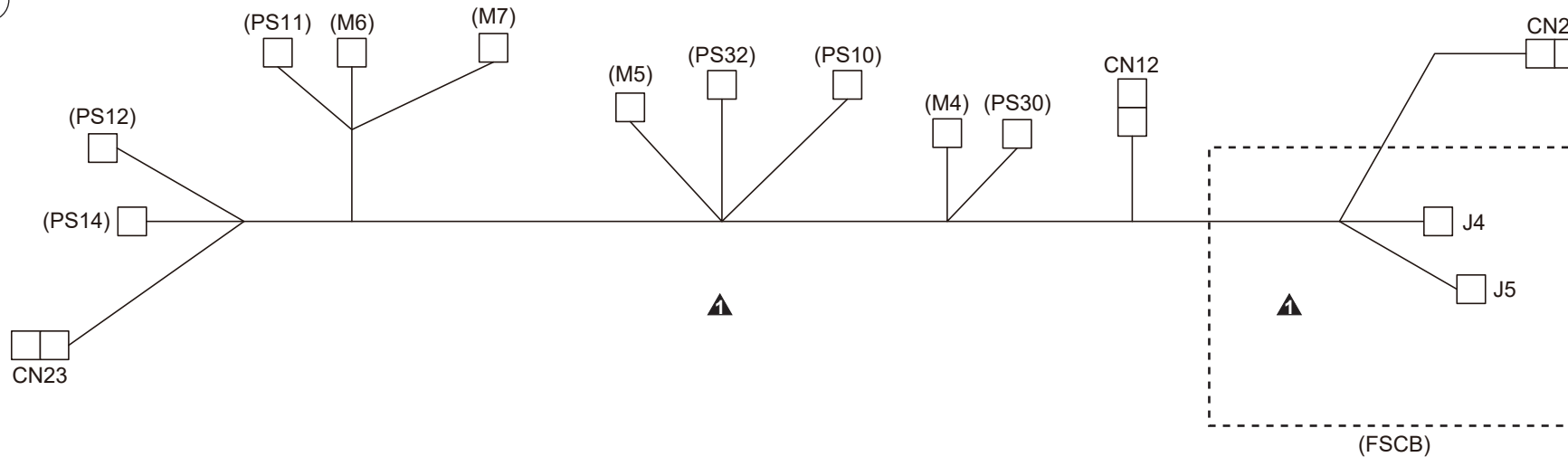


WIRING

①



②



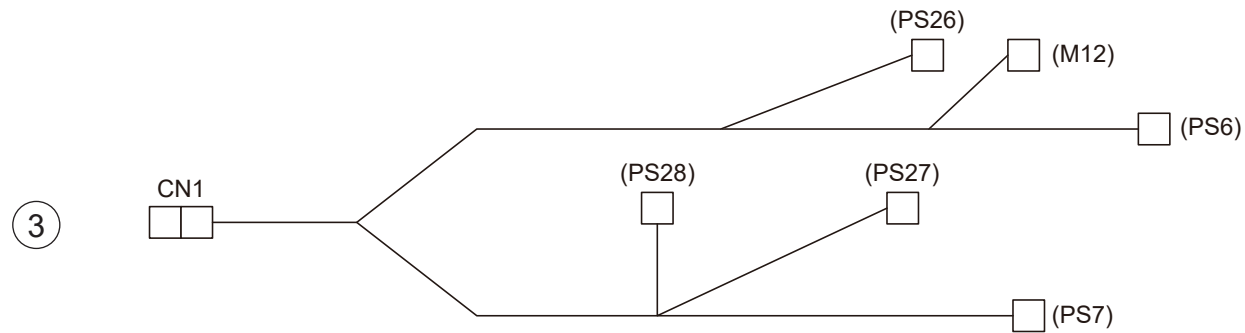
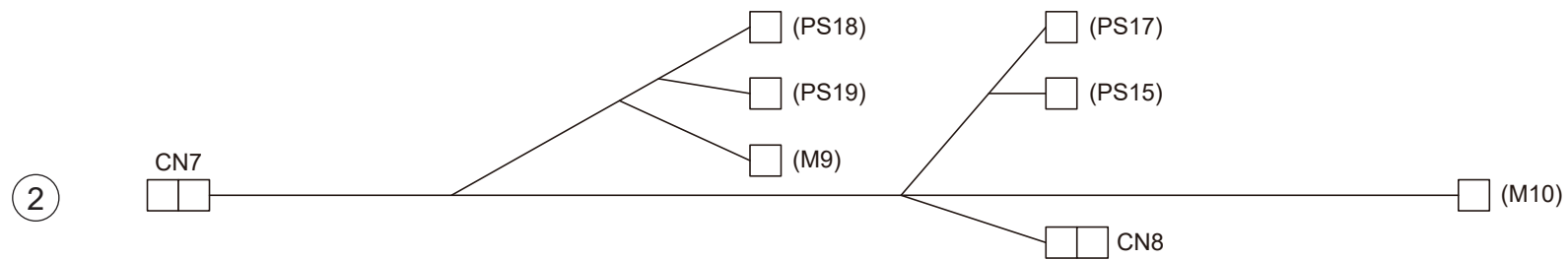
Reference Page of electric parts

M4:P3	PS10:P2	PS30:P4
M5:P13	PS11:P3	PS32:P2
M6:P3	PS12:P14	SW2:P13
M7:P14	PS14:P13	FSCB:P2

改訂版 REVISED EDITION	日付 DATE
▲	NOVEMBER 2017

WIRING

Key	Part No.	Description	Destinations	Class	QTY	Standard parts
1	A3EPPPBF02	Harness Assy		D	1	
2	A3EPPPBU02Old	Wire Harness Assy		D	1	
2	A3EPPPBU04	Wire Harness Assy		D	1	



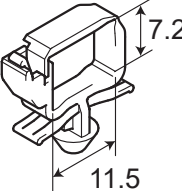
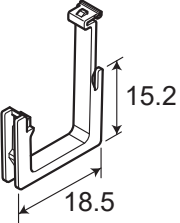
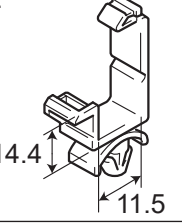
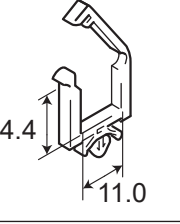
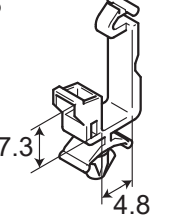
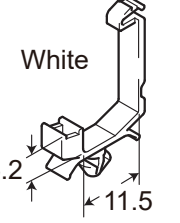
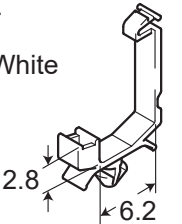
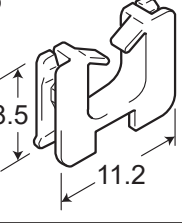
Reference Page of electric parts

FSCB :P2	M9:P10	M12:P7
M2:P4	M10:P10	PS6:P7
M3:P4	PS15:P10	PS7:P7
M11:P8	PS17:P10	PS26:P7
PS9:P2	PS18:P10	PS27:P7
PS13:P14	PS19:P10	PS28:P7
PS25:P8		

WIRING

Key	Part No.	Description	Destinations	Class	QTY	Standard parts
1	A87GPP0S00	Harness		D	1	
2	A3EPPPC901	Wire Harness Assy		D	1	
3	A3EPPPCM01	Wire Harness Assy		D	1	

WIRING ACCESSORIES AND JIGS

1 	6 	11	16	21	26	31	36
2 	7 	12	17	22	27	32	37
3 	8 White 	13	18	23	28	33	38
4 White 	9	14	19	24	29	34	39
5 	10	15	20	25	30	35	40

WIRING ACCESSORIES AND JIGS

Key	Part No.	Description	Destinations	Class	QTY	Standard parts
1	V500010082	Locking Wire Saddle		D		
2	V500010083	Locking Wire Saddle		D		
3	V500020098	Mini Locking wire saddle		D		
4	V500020099	Mini Locking wire saddle		D		
5	V570010021	Saddle		D		
6	V570010026	Locking Edge Saddle		D		
7	A3EPPPDB00	Wire Saddle		D		
8	V500010081	Locking Wire Saddle		D		

MAINTENANCE LIST

● The items with no Page/Key numbers are not handled as spare parts.

No.	Section	PM Parts Description	Maintenance Cycle (K=1,000)		Parts No.	Destinations	Page/Key	Note
			QTY	Replace				
1	FS-536	Paddle	2	2000K	A87GPP0W01		P13-26	*1
2		Paddle	1	2000K	A87GPP0X01		P13-27	*1

*1: Actual durable cycle (life counter value)

メンテナンスリスト

● ページ / キーナンバーのないものは、アフターサービス部品ではありません。

No.	区分	PM 部品名称	サイクル (K=1,000)		部品番号	仕向地	頁 / キー	備考
			員数	交換				
1	FS-536	パドル	2	2000K	A87GPP0W01		P13-26	*1
2		パドル	1	2000K	A87GPP0X01		P13-27	*1

*1: 実質交換サイクル値 (ライフカウンター値)

DESTINATION

Destination No.		Destinations		V	Hz	Model No.
A	A1	JAPAN		100	50/60	A87GWY1
	A2	JAPAN				
B		USA, CANADA		120	60	A87GWY1, A87GWY3
C		EUROPEAN TYPE		220-240	50/60	A87GWY1
D	D1	S.E ASIA TYPE	THAILAND, SRI LANKA, SINGAPORE, MALAYSIA, HONG KONG, PAKISTAN, INDIA, BANGLADESH, INDONESIA	220-240	50/60	A87GWY1
	D3	OCEANIA TYPE	AUSTRALIA, NEW ZEALAND	220-240	50/60	A87GWY1
E		PHILIPPINES		220-240	50/60	A87GWY1
F	F1	SAUDI ARABIA				
	F2	SAUDI ARABIA		220-240	50/60	A87GWY1
G	G1	C.S AMERICA		220-240	50/60	A87GWY1
	G2	C.S AMERICA				
H		TAIWAN		110	60	A87GWY1
I		JORDAN, LEBANON, SYRIA, SOUTH AFRICA, IRAQ, IRAN, N.YEMEN, CAMEROON, UAE, BAHRAIN, OMAN, QATAR, KUWAIT, KENYA, TUNISIA, IVORY COAST, MOROCCO		220-240	50/60	A87GWY1
J		CHINA		220-240	50/60	A87GWY1
K		KOREA		220-240	50/60	A87GWY1